

## Product datasheet for **TA338607**

### Cadherin 24 (CDH24) Rabbit Polyclonal Antibody

#### Product data:

|                         |   |
|-------------------------|---|
| Product Type:           | Primary Antibodies  |
| Applications:           | WB  |
| Recommended Dilution:   | WB  |
| Reactivity:             | Human   |
| Host:                   | Rabbit  |
| Isotype:                | IgG   |
| Clonality:              | Polyclonal  |
| Immunogen:              | The immunogen for anti-CDH24 antibody: synthetic peptide directed towards the N terminal of human CDH24. Synthetic peptide located within the following region:<br>NPPIFPLGPYHATVPMSNVGTSVIQVTAHDADDPSYGNSAKLVYTVLDG  |
| Formulation:            | Liquid. Purified antibody supplied in 1x PBS buffer with 0.09% (w/v) sodium azide and 2% sucrose.<br><i>Note that this product is shipped as lyophilized powder to China customers.</i>   |
| Concentration:          | lot specific  |
| Purification:           | Protein A purified  |
| Conjugation:            | Unconjugated  |
| Storage:                | Store at -20°C as received.   |
| Stability:              | Stable for 12 months from date of receipt.  |
| Predicted Protein Size: | 88 kDa  |
| Gene Name:              | cadherin 24   |
| Database Link:          | <a href="#">NP_071923</a><br><a href="#">Entrez Gene 64403 Human</a><br><a href="#">Q86UP0</a>  |
| Background:             | Cadherins are calcium dependent cell adhesion proteins. They preferentially interact with themselves in a homophilic manner in connecting cells; cadherins may thus contribute to the sorting of heterogeneous cell types. Cadherin-24 mediate strong cell-cell adhesion. |
| Synonyms:               | CDH11L  |

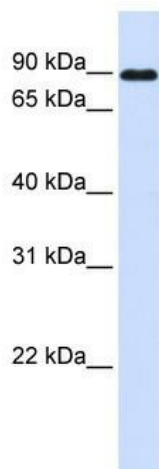


[View online »](#)

**Note:** Immunogen Sequence Homology: Dog: 100%; Pig: 100%; Rat: 100%; Horse: 100%; Human: 100%; Mouse: 100%; Bovine: 100%; Rabbit: 100%; Guinea pig: 100%; Zebrafish: 92%

**Protein Families:** Transmembrane

**Product images:**



WB Suggested Anti-CDH24 Antibody Titration:  
0.2-1 ug/ml; ELISA Titer: 1: 62500; Positive  
Control: Human Placenta