

Product datasheet for **TA338606**

CHST8 Rabbit Polyclonal Antibody

Product data:

Product Type:	Primary Antibodies
Applications:	WB
Recommended Dilution:	WB
Reactivity:	Human
Host:	Rabbit
Isotype:	IgG
Clonality:	Polyclonal
Immunogen:	The immunogen for anti-CHST8 antibody: synthetic peptide directed towards the middle region of human CHST8. Synthetic peptide located within the following region: GCSNWKRVLMVLAGLASSTADIQHNTVHYGSALKRLDTFDRQGILHRLST
Formulation:	Liquid. Purified antibody supplied in 1x PBS buffer with 0.09% (w/v) sodium azide and 2% sucrose. <i>Note that this product is shipped as lyophilized powder to China customers.</i>
Concentration:	lot specific
Purification:	Protein A purified
Conjugation:	Unconjugated
Storage:	Store at -20°C as received.
Stability:	Stable for 12 months from date of receipt.
Predicted Protein Size:	49 kDa
Gene Name:	carbohydrate sulfotransferase 8
Database Link:	NP_071912 Entrez Gene 64377 Human Q9H2A9



[View online »](#)

Background:

Sulfate groups in carbohydrates confer highly specific functions on glycoproteins, glycolipids, and proteoglycans and are critical for cell-cell interaction, signal transduction, and embryonic development. Sulfotransferases, such as CHST8, carry out sulfation of carbohydrates. Sulfate groups in carbohydrates confer highly specific functions on glycoproteins, glycolipids, and proteoglycans and are critical for cell-cell interaction, signal transduction, and embryonic development. Sulfotransferases, such as CHST8, carry out sulfation of carbohydrates (Hiraoka et al., 2001 [PubMed 11445554]). [supplied by OMIM]

Synonyms:

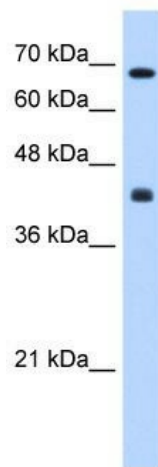
GalNAc4ST; GALNAC4ST1; PSS3

Note:

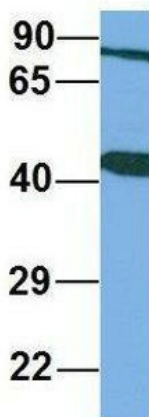
Immunogen Sequence Homology: Dog: 100%; Pig: 100%; Rat: 100%; Horse: 100%; Human: 100%; Mouse: 100%; Guinea pig: 100%; Bovine: 86%; Rabbit: 86%

Protein Families:

Transmembrane

Product images:


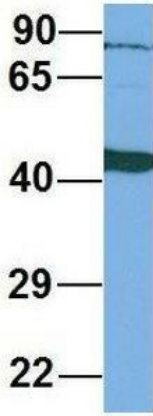
WB Suggested Anti-CHST8 Antibody Titration: 0.2-1 ug/ml; Positive Control: HepG2 cell lysate

CHST8


Rabbit Anti-CHST8
 Sample Type: Human Adult Placenta
 Antibody Concentration: 1ug/mL

Host: Rabbit; Target Name: CHST8; Sample Tissue: Human Adult Placenta; Antibody Dilution: 1.0 ug/ml

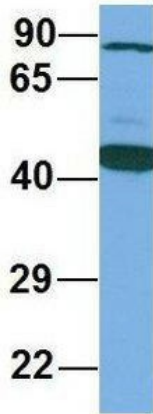
CHST8



Rabbit Anti-CHST8
Sample Type: Human Fetal Liver
Antibody Concentration: 1ug/mL

Host: Rabbit; Target Name: CHST8; Sample
Tissue: Human Fetal Liver; Antibody Dilution: 1.0
ug/ml

CHST8



Rabbit Anti-CHST8
Sample Type: Human Fetal Lung
Antibody Concentration: 1ug/mL

Host: Rabbit; Target Name: CHST8; Sample
Tissue: Human Fetal Lung; Antibody Dilution: 1.0
ug/ml