

## Product datasheet for **TA338604**

### **RHBDF1 Rabbit Polyclonal Antibody**

#### **Product data:**

Product Type:	Primary Antibodies
Applications:	WB
Recommended Dilution:	WB
Reactivity:	Human
Host:	Rabbit
Isotype:	IgG
Clonality:	Polyclonal
Immunogen:	The immunogen for anti-RHBDF1 antibody: synthetic peptide directed towards the N terminal of human RHBDF1. Synthetic peptide located within the following region: KDWEKAPEQADLTGGALDRSELSHMLPLERGWKQKEGAAAPQPKVR
Formulation:	Liquid. Purified antibody supplied in 1x PBS buffer with 0.09% (w/v) sodium azide and 2% sucrose. <i>Note that this product is shipped as lyophilized powder to China customers.</i>
Concentration:	lot specific
Purification:	Protein A purified
Conjugation:	Unconjugated
Storage:	Store at -20°C as received.
Stability:	Stable for 12 months from date of receipt.
Predicted Protein Size:	97 kDa
Gene Name:	rhomboid 5 homolog 1
Database Link:	<a href="#">NP_071895</a> <a href="#">Entrez Gene 64285 Human</a> <a href="#">Q96CC6</a>
Background:	RHBDF1 is a seven-transmembrane protein with a long N-terminal cytoplasmic extension that comprises half of the polypeptide sequence, and is found in the endoplasmic reticulum and Golgi, but not on the cell surface. RHBDF1 has a pivotal role in sustaining growth signals in epithelial cancer cells and thus may serve as a therapeutic target for treating epithelial cancers.



[View online »](#)

**Synonyms:** C16orf8; Dist1; EGFR-RS; gene-89; gene-90; hDist1

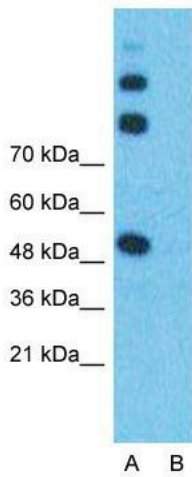
**Note:** Immunogen Sequence Homology: Dog: 100%; Pig: 100%; Rat: 100%; Horse: 100%; Human: 100%; Mouse: 100%; Bovine: 100%; Rabbit: 100%; Guinea pig: 100%; Zebrafish: 79%

**Protein Families:** Druggable Genome, Protease, Transmembrane

**Product images:**



WB Suggested Anti-RHBDF1 Antibody Titration:  
0.2-1 ug/ml; ELISA Titer: 1: 62500; Positive Control: 721\_B cell lysate



**Anti-RHBDF1 Western Blot & Peptide Block Validation**

Lysate: 721\_B Cell

Lane A: Primary Antibody  
Lane B: Primary Antibody + Blocking Peptide

Primary Antibody Concentration: 1.0µg/ml  
Peptide Concentration: 5.0µg/ml  
Lysate Quantity: 25µg/lane  
Gel Concentration: 12%

Host: Rabbit; Target Name: RHBDF1; Sample Tissue: 721\_B Whole Cell; Lane A: Primary Antibody; Lane B: Primary Antibody + Blocking Peptide; Primary Antibody Concentration: 1 ug/ml; Peptide Concentration: 5 ug/ml; Lysate Quantity: 25 ug/lane/Lane; Gel Conce