

Product datasheet for **TA338602**

HERPUD2 Rabbit Polyclonal Antibody

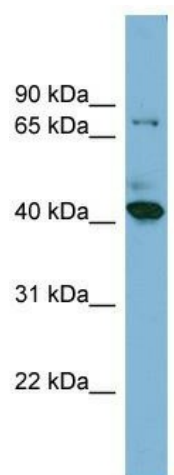
Product data:

Product Type:	Primary Antibodies
Applications:	WB
Recommended Dilution:	WB
Reactivity:	Human
Host:	Rabbit
Isotype:	IgG
Clonality:	Polyclonal
Immunogen:	The immunogen for anti-HERPUD2 antibody: synthetic peptide directed towards the N terminal of human HERPUD2. Synthetic peptide located within the following region: MDQSGMEIPVTLIIKAPNQKYSQTISCFLNWTVGKCLKTHLSNVYPSKPL
Formulation:	Liquid. Purified antibody supplied in 1x PBS buffer with 0.09% (w/v) sodium azide and 2% sucrose.
Concentration:	lot specific
Purification:	Protein A purified
Conjugation:	Unconjugated
Storage:	Store at -20°C as received.
Stability:	Stable for 12 months from date of receipt.
Predicted Protein Size:	45 kDa
Gene Name:	HERPUD family member 2
Database Link:	NP_071768 Entrez Gene 64224 Human Q9BSE4
Background:	HERPUD2 could be involved in the unfolded protein response (UPR) pathway.
Synonyms:	FLJ22313; FLJ31032
Note:	Immunogen Sequence Homology: Dog: 100%; Pig: 100%; Rat: 100%; Horse: 100%; Human: 100%; Mouse: 100%; Bovine: 100%; Rabbit: 100%; Zebrafish: 92%
Protein Families:	Druggable Genome, Transmembrane



[View online »](#)

Product images:



WB Suggested Anti-HERPUD2 Antibody Titration:
0.2-1 ug/ml; ELISA Titer: 1: 62500; Positive
Control: NCI-H226 cell lysate