

Product datasheet for **TA338601**

STRA6 Rabbit Polyclonal Antibody

Product data:

Product Type:	Primary Antibodies
Applications:	WB
Recommended Dilution:	WB
Reactivity:	Human
Host:	Rabbit
Isotype:	IgG
Clonality:	Polyclonal
Immunogen:	The immunogen for anti-STRA6 antibody: synthetic peptide directed towards the N terminal of human STRA6. Synthetic peptide located within the following region: MSSQPAGNQTSPGATEDYSYGSWYIDEPQGGEELQPEGEVPSCHTSIPPG
Formulation:	Liquid. Purified antibody supplied in 1x PBS buffer with 0.09% (w/v) sodium azide and 2% sucrose. <i>Note that this product is shipped as lyophilized powder to China customers.</i>
Concentration:	lot specific
Purification:	Protein A purified
Conjugation:	Unconjugated
Storage:	Store at -20°C as received.
Stability:	Stable for 12 months from date of receipt.
Predicted Protein Size:	73 kDa
Gene Name:	stimulated by retinoic acid 6
Database Link:	NP_071764 Entrez Gene 64220 Human Q9BX79
Background:	STRA6 may act as a high-affinity cell-surface receptor for the complex retinol-retinol binding protein (RBP/RBP4). STRA6 acts by removing retinol from RBP/RBP4 and transports it across the plasma membrane, where it can be metabolized. This mechanism does not depend on endocytosis. STRA6 binds to RBP/RBP4 with high affinity. STRA6 increases cellular retinol uptake from the retinol-RBP complex.



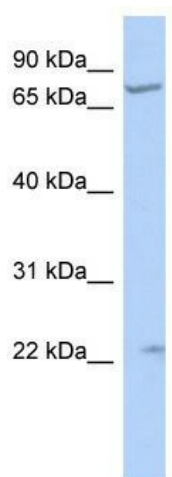
[View online »](#)

Synonyms: MCOPCB8; MCOPS9; PP14296

Note: Immunogen Sequence Homology: Human: 100%

Protein Families: Transmembrane

Product images:



WB Suggested Anti-STRA6 Antibody Titration: 0.2-1 ug/ml; ELISA Titer: 1: 62500; Positive Control: HepG2 cell lysate