

Product datasheet for **TA338596**

CACNA1I Rabbit Polyclonal Antibody

Product data:

Product Type:	Primary Antibodies
Applications:	WB
Recommended Dilution:	WB
Reactivity:	Human
Host:	Rabbit
Isotype:	IgG
Clonality:	Polyclonal
Immunogen:	The immunogen for anti-CACNA1I antibody: synthetic peptide directed towards the middle region of human CACNA1I. Synthetic peptide located within the following region: LRTDTGDTVPRKNFDSLLWAIQVTFQILTQEDWNVVLYNGMASTSPWAS
Formulation:	Liquid. Purified antibody supplied in 1x PBS buffer with 0.09% (w/v) sodium azide and 2% sucrose. <i>Note that this product is shipped as lyophilized powder to China customers.</i>
Concentration:	lot specific
Purification:	Protein A purified
Conjugation:	Unconjugated
Storage:	Store at -20°C as received.
Stability:	Stable for 12 months from date of receipt.
Predicted Protein Size:	245 kDa
Gene Name:	calcium voltage-gated channel subunit alpha1 I
Database Link:	NP_001003406 Entrez Gene 8911 Human Q9P0X4



[View online »](#)

Background: This gene encodes the pore-forming alpha subunit of a voltage gated calcium channel. The encoded protein is a member of a subfamily of calcium channels referred to as is a low voltage-activated, T-type, calcium channel. The channel encoded by this protein is characterized by a slower activation and inactivation compared to other T-type calcium channels. This protein may be involved in calcium signaling in neurons. Alternate splicing results in multiple transcript variants. [provided by RefSeq, Oct 2011]

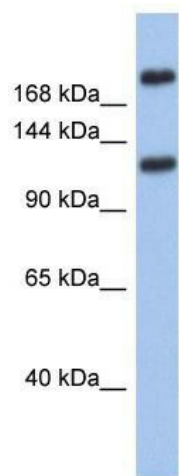
Synonyms: ca(v)3.3; Cav3.3

Note: Immunogen Sequence Homology: Dog: 100%; Pig: 100%; Rat: 100%; Horse: 100%; Human: 100%; Mouse: 100%; Bovine: 100%; Guinea pig: 100%; Rabbit: 92%; Zebrafish: 92%

Protein Families: Druggable Genome, Ion Channels: Calcium, Transmembrane

Protein Pathways: Calcium signaling pathway, MAPK signaling pathway

Product images:



WB Suggested Anti-CACNA11 Antibody Titration:
0.2-1 ug/ml; ELISA Titer: 1:62500; Positive Control:
Human Small Intestine