

Product datasheet for **TA338592**

TRP 7 (TRPC7) Rabbit Polyclonal Antibody

Product data:

Product Type:	Primary Antibodies
Applications:	WB
Recommended Dilution:	WB
Reactivity:	Human
Host:	Rabbit
Isotype:	IgG
Clonality:	Polyclonal
Immunogen:	The immunogen for Anti-TRPC7 antibody is: synthetic peptide directed towards the C-terminal region of Human TRPC7. Synthetic peptide located within the following region: KAQVDRENDEVNEGELKEIKQDISSLRYELLEKSQATGELADLIQQLSE
Formulation:	Liquid. Purified antibody supplied in 1x PBS buffer with 0.09% (w/v) sodium azide and 2% sucrose. <i>Note that this product is shipped as lyophilized powder to China customers.</i>
Concentration:	lot specific
Purification:	Protein A purified
Conjugation:	Unconjugated
Storage:	Store at -20°C as received.
Stability:	Stable for 12 months from date of receipt.
Predicted Protein Size:	99 kDa
Gene Name:	transient receptor potential cation channel subfamily C member 7
Database Link:	NP_065122 Entrez Gene 57113 Human Q9HCX4
Background:	Thought to form a receptor-activated non-selective calcium permeant cation channel. Probably is operated by a phosphatidylinositol second messenger system activated by receptor tyrosine kinases or G-protein coupled receptors. Activated by diacylglycerol (DAG) (By similarity). May also be activated by intracellular calcium store depletion.
Synonyms:	TRP7

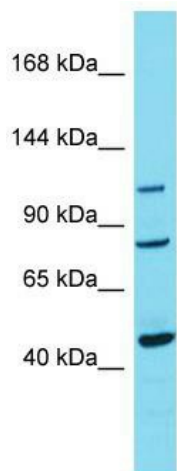


[View online »](#)

Note: Immunogen Sequence Homology: Dog: 100%; Pig: 100%; Rat: 100%; Horse: 100%; Human: 100%; Mouse: 100%; Bovine: 100%; Rabbit: 100%; Zebrafish: 100%; Guinea pig: 100%

Protein Families: Druggable Genome, Ion Channels: Transient receptor potential, Transmembrane

Product images:



Host: Rabbit; Target Name: TRPC7; Sample
Tissue: Breast Tumor lysates; Antibody Dilution:
1.0 ug/ml