

Product datasheet for **TA338587**

KIR5.1 (KCNJ16) Rabbit Polyclonal Antibody

Product data:

Product Type:	Primary Antibodies
Applications:	WB
Recommended Dilution:	WB
Reactivity:	Rat
Host:	Rabbit
Isotype:	IgG
Clonality:	Polyclonal
Immunogen:	The immunogen for Anti-Kcnj16 antibody is: synthetic peptide directed towards the C-terminal region of Rat Kcnj16. Synthetic peptide located within the following region: VTFIYTG DSTGTSHQSRSSYVPREILWGHRFHDVLEVKRKYKVNCLQFE
Formulation:	Liquid. Purified antibody supplied in 1x PBS buffer with 0.09% (w/v) sodium azide and 2% sucrose. <i>Note that this product is shipped as lyophilized powder to China customers.</i>
Concentration:	lot specific
Purification:	Protein A purified
Conjugation:	Unconjugated
Storage:	Store at -20°C as received.
Stability:	Stable for 12 months from date of receipt.
Predicted Protein Size:	46 kDa
Gene Name:	potassium voltage-gated channel subfamily J member 16
Database Link:	NP_061128 Entrez Gene 29719 Rat Q9NPI9
Background:	inward rectifying potassium channel; may be involved in renal pH regulation [RGD, Feb 2006]. ##Evidence-Data-START## Transcript exon combination :: BC078776.1 [ECO:0000332] ##Evidence-Data-END##
Synonyms:	BIR9; KIR5.1

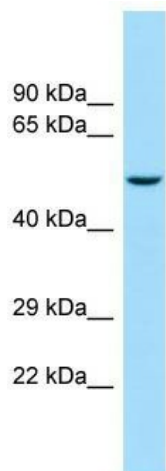


[View online »](#)

Note: Immunogen Sequence Homology: Dog: 100%; Pig: 100%; Rat: 100%; Horse: 100%; Human: 100%; Mouse: 100%; Bovine: 100%; Rabbit: 100%; Guinea pig: 100%

Protein Families: Druggable Genome, Ion Channels: Potassium, Transmembrane

Product images:



Host: Rabbit; Target Name: Kcnj16; Sample Tissue: Rat Thymus lysates; Antibody Dilution: 1.0 ug/ml