

Product datasheet for **TA338586**

KIR5.1 (KCNJ16) Rabbit Polyclonal Antibody

Product data:

Product Type:	Primary Antibodies
Applications:	WB
Recommended Dilution:	WB
Reactivity:	Human
Host:	Rabbit
Isotype:	IgG
Clonality:	Polyclonal
Immunogen:	The immunogen for anti-KCNJ16 antibody: synthetic peptide directed towards the middle region of human KCNJ16. Synthetic peptide located within the following region: RESCTSDTKARRRSFSAVAIVSSCENPEETTTSATHEYRETPYQKALLTL
Formulation:	Liquid. Purified antibody supplied in 1x PBS buffer with 0.09% (w/v) sodium azide and 2% sucrose. <i>Note that this product is shipped as lyophilized powder to China customers.</i>
Concentration:	lot specific
Purification:	Protein A purified
Conjugation:	Unconjugated
Storage:	Store at -20°C as received.
Stability:	Stable for 12 months from date of receipt.
Predicted Protein Size:	48 kDa
Gene Name:	potassium voltage-gated channel subfamily J member 16
Database Link:	NP_061128 Entrez Gene 3773 Human Q9NPI9



[View online »](#)

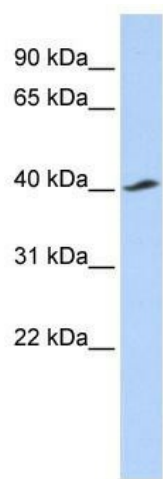
Background: Potassium channels are present in most mammalian cells, where they participate in a wide range of physiologic responses. The protein encoded by this gene is an integral membrane protein and inward-rectifier type potassium channel. The encoded protein, which tends to allow potassium to flow into rather than out of a cell, can form heterodimers with two other inward-rectifier type potassium channels. It may function in fluid and pH balance regulation. Alternatively spliced transcript variants have been found for this gene. [provided by RefSeq, Apr 2014]

Synonyms: BIR9; KIR5.1

Note: Immunogen Sequence Homology: Human: 100%; Horse: 93%; Dog: 86%; Rabbit: 86%; Pig: 79%

Protein Families: Druggable Genome, Ion Channels: Potassium, Transmembrane

Product images:



WB Suggested Anti-KCNJ16 Antibody Titration:
0.2-1 ug/ml; ELISA Titer: 1:12500; Positive Control:
721_B cell lysate