

Product datasheet for **TA338585**

TRPV6 Rabbit Polyclonal Antibody

Product data:

Product Type:	Primary Antibodies
Applications:	WB
Recommended Dilution:	WB, IF
Reactivity:	Human, Rat
Host:	Rabbit
Isotype:	IgG
Clonality:	Polyclonal
Immunogen:	The immunogen for anti-Trpv6 antibody: synthetic peptide corresponding to a region of Rat. Synthetic peptide located within the following region: TEIDSSGDDQSLLELIVTTKKREARQILDQTPVKELVSLKWKRYGRPYFC
Formulation:	Liquid. Purified antibody supplied in 1x PBS buffer with 0.09% (w/v) sodium azide and 2% sucrose. <i>Note that this product is shipped as lyophilized powder to China customers.</i>
Concentration:	lot specific
Purification:	Protein A purified
Conjugation:	Unconjugated
Storage:	Store at -20°C as received.
Stability:	Stable for 12 months from date of receipt.
Predicted Protein Size:	83 kDa
Gene Name:	transient receptor potential cation channel subfamily V member 6
Database Link:	NP_061116 Entrez Gene 114246 Rat Entrez Gene 55503 Human Q9H1D0
Background:	a Ca(2+)-sensing Ca(2+) channel [RGD, Feb 2006]. Publication Note: This RefSeq record includes a subset of the publications that are available for this gene. Please see the Gene record to access additional publications. ##Evidence-Data-START## Transcript exon combination :: AF160798.1 [ECO:0000332] RNAseq introns :: single sample supports all introns SRS369728, SRS369746 [ECO:0000348] ##Evidence-Data-END##



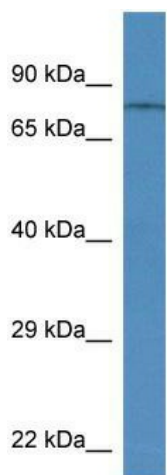
[View online »](#)

Synonyms: ABP; CAT1; CATL; ECAC2; HSA277909; LP6728; ZF; ZFAB

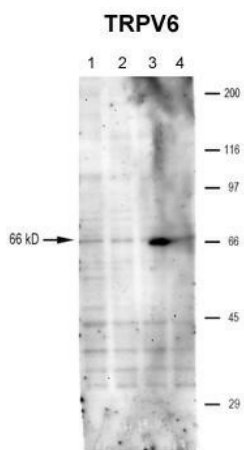
Note: Immunogen Sequence Homology: Human: 100%; Dog: 93%; Rat: 93%; Horse: 93%; Rabbit: 93%; Pig: 92%; Guinea pig: 92%; Mouse: 86%

Protein Families: Druggable Genome, Ion Channels: Transient receptor potential, Transmembrane

Product images:



Trpv6 antibody - middle region validated by WB using Rat Brain lysate at 1 ug/ml.



Sample Type: hRetinal pigment epithelial cells, 4 individual donors (20ug); Primary Dilution: 1:1000; Secondary Antibody: goat anti-rabbit-AP; Secondary Dilution: 1:2000; Image Submitted by: Brian Kennedy; Indiana University Northwest See Customer Feedback

See Immunoblot 2 Data for more information.