

Product datasheet for **TA338584**

GABRQ Rabbit Polyclonal Antibody

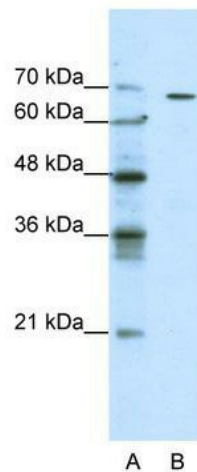
Product data:

Product Type:	Primary Antibodies
Applications:	WB
Recommended Dilution:	WB
Reactivity:	Human
Host:	Rabbit
Isotype:	IgG
Clonality:	Polyclonal
Immunogen:	The immunogen for anti-GABRQ antibody: synthetic peptide directed towards the N terminal of human GABRQ. Synthetic peptide located within the following region: KFHFEFSSAVPEVVLNLFNCKNCANEAVVQKILDRVLSRYDVRLRPNFGG
Formulation:	Liquid. Purified antibody supplied in 1x PBS buffer with 0.09% (w/v) sodium azide and 2% sucrose. <i>Note that this product is shipped as lyophilized powder to China customers.</i>
Concentration:	lot specific
Purification:	Protein A purified
Conjugation:	Unconjugated
Storage:	Store at -20°C as received.
Stability:	Stable for 12 months from date of receipt.
Predicted Protein Size:	72 kDa
Gene Name:	gamma-aminobutyric acid type A receptor theta subunit
Database Link:	NP_061028 Entrez Gene 55879 Human Q9UN88



[View online »](#)

Background:	The gamma-aminobutyric acid (GABA) A receptor is a multisubunit chloride channel that mediates the fastest inhibitory synaptic transmission in the central nervous system. This gene encodes the theta subunit of the GABA A receptor. The gene is mapped to chromosome Xq28 in a cluster of genes including those that encode the alpha 3 and epsilon subunits of the GABA A receptor. This gene location is also the candidate region of two different neurologic diseases: early-onset parkinsonism (Waisman syndrome) and X-linked mental retardation (MRX3). [provided by RefSeq, Nov 2009]
Synonyms:	THETA
Note:	Immunogen Sequence Homology: Rat: 100%; Human: 100%; Mouse: 100%; Rabbit: 100%; Pig: 93%; Horse: 93%; Dog: 87%; Bovine: 87%; Guinea pig: 80%
Protein Families:	Druggable Genome, Ion Channels: Cys-loop Receptors, Transmembrane
Protein Pathways:	Neuroactive ligand-receptor interaction

Product images:

WB Suggested Anti-GABRQ Antibody Titration:
0.2-1 ug/ml; ELISA Titer: 1:12500; Positive Control:
Jurkat cell lysate