

## Product datasheet for **TA338582**

### TPCN1 Rabbit Polyclonal Antibody

#### Product data:

Product Type:	Primary Antibodies
Applications:	WB
Recommended Dilution:	WB
Reactivity:	Human
Host:	Rabbit
Isotype:	IgG
Clonality:	Polyclonal
Immunogen:	The immunogen for anti-TPCN1 antibody: synthetic peptide directed towards the N terminal of human TPCN1. Synthetic peptide located within the following region: YQEAAIYLQEGENNDKFFTHPKDAKALAAAYLFAHNHLFYLMELATALLL
Formulation:	Liquid. Purified antibody supplied in 1x PBS buffer with 0.09% (w/v) sodium azide and 2% sucrose. <i>Note that this product is shipped as lyophilized powder to China customers.</i>
Concentration:	lot specific
Purification:	Protein A purified
Conjugation:	Unconjugated
Storage:	Store at -20°C as received.
Stability:	Stable for 12 months from date of receipt.
Predicted Protein Size:	94 kDa
Gene Name:	two pore segment channel 1
Database Link:	<a href="#">NP_060371</a> <a href="#">Entrez Gene 53373 Human</a> <a href="#">Q9ULQ1</a>



[View online »](#)

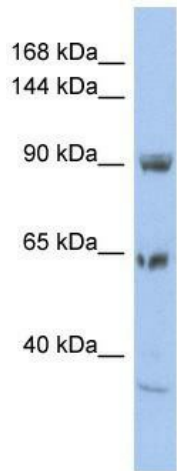
**Background:** Voltage-gated Ca<sup>2+</sup> and Na<sup>+</sup> channels have 4 homologous domains, each containing 6 transmembrane segments, S1 to S6. TPCN1 is similar to these channels, but it has only 2 domains containing S1 to S6 (Ishibashi et al., 2000 [PubMed 10753632]). [supplied by OMIM, Mar 2008]. Transcript Variant: This variant (2) differs in the 5' UTR, lacks a portion of the 5' coding region, and uses a downstream start codon, compared to variant 1. The encoded isoform (2) has a shorter N-terminus compared to isoform 1. ##Evidence-Data-START## Transcript exon combination :: BC150203.1, AB032995.2 [ECO:0000332] ##Evidence-Data-END## COMPLETENESS: complete on the 3' end.

**Synonyms:** TPC1

**Note:** Immunogen Sequence Homology: Dog: 100%; Pig: 100%; Rat: 100%; Horse: 100%; Human: 100%; Bovine: 100%; Rabbit: 100%; Zebrafish: 100%; Guinea pig: 100%; Mouse: 93%

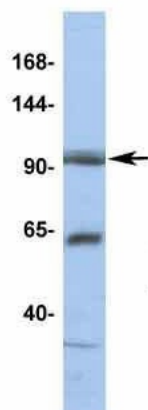
**Protein Families:** Druggable Genome, Ion Channels: Other, Transmembrane

### Product images:



WB Suggested Anti-TPCN1 Antibody Titration: 0.2-1 ug/ml; ELISA Titer: 1:62500; Positive Control: HT1080 cell lysate

## TPCN1



Rabbit Anti-TPCN1

Sample Type: HT1080

Antibody Concentration: 1ug/mL

Host: Rabbit; Target Name: TPCN1; Sample  
Tissue: HT1080; Antibody Dilution: 1.0 ug/ml