

Product datasheet for **TA338579**

CLIC5 Rabbit Polyclonal Antibody

Product data:

Product Type:	Primary Antibodies
Applications:	IHC, WB
Recommended Dilution:	WB, IHC
Reactivity:	Human
Host:	Rabbit
Isotype:	IgG
Clonality:	Polyclonal
Immunogen:	The immunogen for anti-CLIC5 antibody: synthetic peptide directed towards the C terminal of human CLIC5. Synthetic peptide located within the following region: YRNYDIPAEMTGLWRYLK NAYARDEFTNTCAADSEIELAYADVAKRLSRS
Formulation:	Liquid. Purified antibody supplied in 1x PBS buffer with 0.09% (w/v) sodium azide and 2% sucrose. <i>Note that this product is shipped as lyophilized powder to China customers.</i>
Concentration:	lot specific
Purification:	Protein A purified
Conjugation:	Unconjugated
Storage:	Store at -20°C as received.
Stability:	Stable for 12 months from date of receipt.
Predicted Protein Size:	28 kDa
Gene Name:	chloride intracellular channel 5
Database Link:	NP_058625 Entrez Gene 53405 Human Q9NZA1



[View online »](#)

Background: This gene encodes a member of the chloride intracellular channel (CLIC) family of chloride ion channels. The encoded protein associates with actin-based cytoskeletal structures and may play a role in multiple processes including hair cell stereocilia formation, myoblast proliferation and glomerular podocyte and endothelial cell maintenance. Alternatively spliced transcript variants encoding multiple isoforms have been observed for this gene. [provided by RefSeq, Dec 2011]

Synonyms: DFNB102; DFNB103; MST130; MSTP130

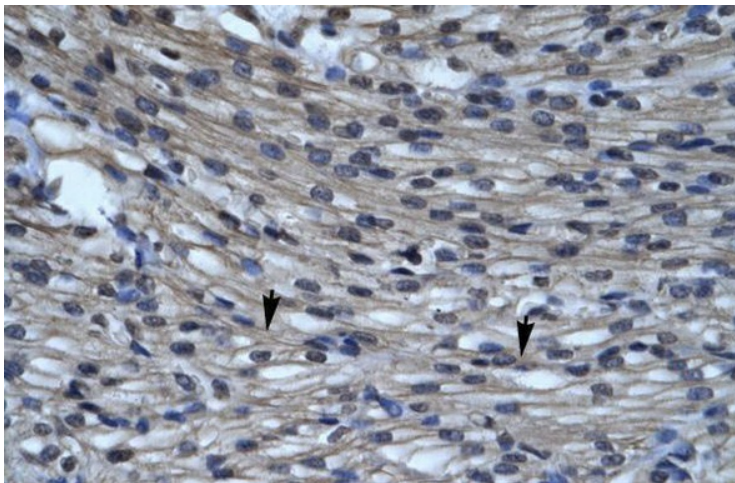
Note: Immunogen Sequence Homology: Pig: 100%; Rat: 100%; Horse: 100%; Human: 100%; Bovine: 100%; Rabbit: 100%; Guinea pig: 100%; Dog: 93%; Mouse: 93%; Zebrafish: 92%

Protein Families: Druggable Genome, Ion Channels: Other

Product images:



WB Suggested Anti-CLIC5 Antibody Titration: 0.2-1 ug/ml; ELISA Titer: 1:1562500; Positive Control: Jurkat cell lysate
There is BioGPS gene expression data showing that CLIC5 is expressed in Jurkat



Human Heart