

Product datasheet for **TA338575**

TRPC4 Rabbit Polyclonal Antibody

Product data:

Product Type:	Primary Antibodies
Applications:	WB
Recommended Dilution:	WB
Reactivity:	Human
Host:	Rabbit
Isotype:	IgG
Clonality:	Polyclonal
Immunogen:	The immunogen for anti-TRPC4 antibody: synthetic peptide directed towards the middle region of human TRPC4. Synthetic peptide located within the following region: CPFKSEKVVVEDTVPIIPKEKHAKEEDSSIDYDLNLPDVTHTEDYVTTRL
Formulation:	Liquid. Purified antibody supplied in 1x PBS buffer with 0.09% (w/v) sodium azide and 2% sucrose. <i>Note that this product is shipped as lyophilized powder to China customers.</i>
Concentration:	lot specific
Purification:	Protein A purified
Conjugation:	Unconjugated
Storage:	Store at -20°C as received.
Stability:	Stable for 12 months from date of receipt.
Predicted Protein Size:	112 kDa
Gene Name:	transient receptor potential cation channel subfamily C member 4
Database Link:	NP_057263 Entrez Gene 7223 Human Q9UBN4



[View online »](#)

Background:

This gene encodes a member of the canonical subfamily of transient receptor potential cation channels. The encoded protein forms a non-selective calcium-permeable cation channel that is activated by Gq-coupled receptors and tyrosine kinases, and plays a role in multiple processes including endothelial permeability, vasodilation, neurotransmitter release and cell proliferation. Single nucleotide polymorphisms in this gene may be associated with generalized epilepsy with photosensitivity. Alternatively spliced transcript variants encoding multiple isoforms have been observed for this gene. [provided by RefSeq, Aug 2011]

Synonyms:

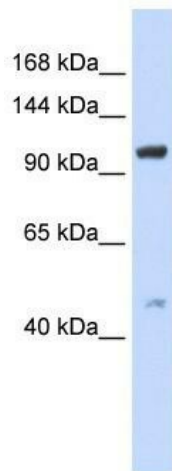
HTRP-4; HTRP4; TRP4

Note:

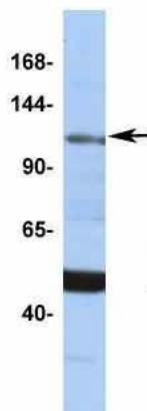
Immunogen Sequence Homology: Human: 100%; Mouse: 100%; Rabbit: 100%; Dog: 93%; Rat: 92%; Bovine: 86%; Pig: 85%; Guinea pig: 82%; Horse: 77%

Protein Families:

Druggable Genome, Ion Channels: Transient receptor potential, Transmembrane

Product images:


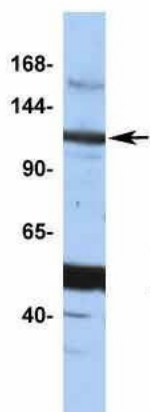
WB Suggested Anti-TRPC4 Antibody Titration: 0.2-1 ug/ml; ELISA Titer: 1:312500; Positive Control: 293T cell lysate

TRPC4


Rabbit Anti-TRPC4
Sample Type: MCF7
Antibody Concentration: 1ug/mL

Host: Rabbit; Target Name: TRPC4; Sample Tissue: MCF7; Antibody Dilution: 1.0 ug/ml

TRPC4



Rabbit Anti-TRPC4
Sample Type: HepG2
Antibody Concentration: 1ug/mL

Host: Rabbit; Target Name: TRPC4; Sample
Tissue: HepG2; Antibody Dilution: 1.0 ug/ml