

Product datasheet for **TA338574**

KCTD3 Rabbit Polyclonal Antibody

Product data:

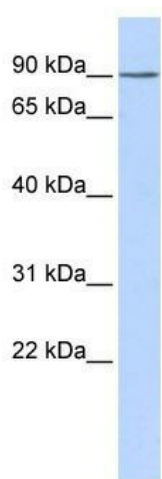
Product Type:	Primary Antibodies
Applications:	IHC, WB
Recommended Dilution:	IHC, WB
Reactivity:	Human
Host:	Rabbit
Isotype:	IgG
Clonality:	Polyclonal
Immunogen:	The immunogen for anti-KCTD3 antibody: synthetic peptide directed towards the middle region of human KCTD3. Synthetic peptide located within the following region: VNKSEDKDVGGPTEEEELKLLDQCDLSTSRCATPNISPATSVVQHSHLRE
Formulation:	Liquid. Purified antibody supplied in 1x PBS buffer with 0.09% (w/v) sodium azide and 2% sucrose. <i>Note that this product is shipped as lyophilized powder to China customers.</i>
Concentration:	lot specific
Purification:	Protein A purified
Conjugation:	Unconjugated
Storage:	Store at -20°C as received.
Stability:	Stable for 12 months from date of receipt.
Predicted Protein Size:	89 kDa
Gene Name:	potassium channel tetramerization domain containing 3
Database Link:	NP_057205 Entrez Gene 51133 Human Q9Y597
Background:	KCTD3 belongs to the KCTD3 family. It contains 1 BTB (POZ) domain and 5 WD repeats. The exact function of KCTD3 is not known.
Synonyms:	NY-REN-45



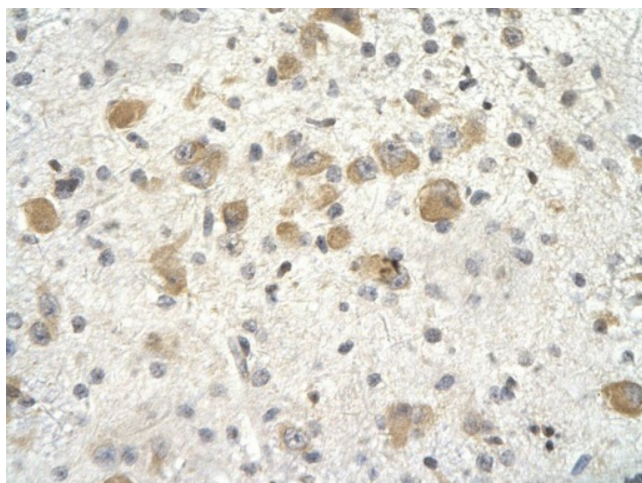
[View online »](#)

Note: Immunogen Sequence Homology: Dog: 100%; Pig: 100%; Horse: 100%; Human: 100%; Bovine: 100%; Rabbit: 100%; Guinea pig: 100%; Rat: 93%; Mouse: 93%; Zebrafish: 85%

Product images:



WB Suggested Anti-KCTD3 Antibody Titration: 0.2-1 ug/ml; ELISA Titer: 1:62500; Positive Control: HeLa cell lysate KCTD3 is supported by BioGPS gene expression data to be expressed in HeLa



Rabbit Anti-KCTD3 Antibody; Paraffin Embedded Tissue: Human neural cell; Cellular Data: Epithelial cells of renal tubule; Antibody Concentration: 4.0-8.0 ug/ml; Magnification: 400X