

Product datasheet for **TA338572**

Nav1.6 (SCN8A) Rabbit Polyclonal Antibody

Product data:

Product Type:	Primary Antibodies
Applications:	WB
Recommended Dilution:	WB
Reactivity:	Human
Host:	Rabbit
Isotype:	IgG
Clonality:	Polyclonal
Immunogen:	The immunogen for anti-SCN8A antibody: synthetic peptide directed towards the middle region of human SCN8A. Synthetic peptide located within the following region: ESDPEGSKDKLDDTSSSEGSTIDIKPEVEEVPVEQPVEYLDPDACFTEGC
Formulation:	Liquid. Purified antibody supplied in 1x PBS buffer with 0.09% (w/v) sodium azide and 2% sucrose. <i>Note that this product is shipped as lyophilized powder to China customers.</i>
Concentration:	lot specific
Purification:	Protein A purified
Conjugation:	Unconjugated
Storage:	Store at -20°C as received.
Stability:	Stable for 12 months from date of receipt.
Predicted Protein Size:	225 kDa
Gene Name:	sodium voltage-gated channel alpha subunit 8
Database Link:	NP_055006 Entrez Gene 6334 Human Q9UQD0



[View online »](#)

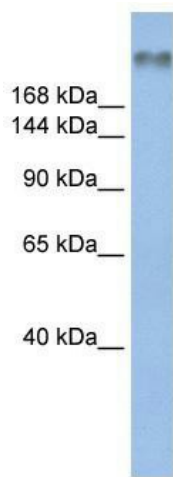
Background: This gene encodes a member of the sodium channel alpha subunit gene family. The encoded protein forms the ion pore region of the voltage-gated sodium channel. This protein is essential for the rapid membrane depolarization that occurs during the formation of the action potential in excitable neurons. Mutations in this gene are associated with mental retardation, pancerebellar atrophy and ataxia. Alternate splicing results in multiple transcript variants. [provided by RefSeq, May 2010]

Synonyms: CERIII; CIAT; EIEE13; MED; NaCh6; Nav1.6; PN4

Note: Immunogen Sequence Homology: Dog: 100%; Pig: 100%; Rat: 100%; Horse: 100%; Human: 100%; Mouse: 100%; Bovine: 100%; Rabbit: 100%; Guinea pig: 100%

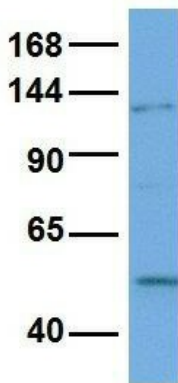
Protein Families: Druggable Genome, Ion Channels: Sodium, Transmembrane

Product images:



WB Suggested Anti-SCN8A Antibody Titration: 0.2-1 ug/ml; ELISA Titer: 1:62500; Positive Control: Human Muscle

SCN8A



Rabbit Anti-SCN8A
 Sample Type: Human NCI-H226
 Antibody Concentration: 1ug/mL

Host: Rabbit; Target Name: SCN8A; Sample Tissue: NCI-H226; Antibody Dilution: 1.0 ug/ml
 SCN8A is supported by BioGPS gene expression data to be expressed in NCIH226