

Product datasheet for **TA338569**

CLIC4 Rabbit Polyclonal Antibody

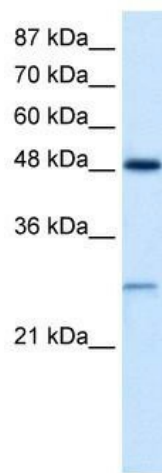
Product data:

Product Type:	Primary Antibodies
Applications:	WB
Recommended Dilution:	WB
Reactivity:	Human
Host:	Rabbit
Isotype:	IgG
Clonality:	Polyclonal
Immunogen:	The immunogen for anti-CLIC4 antibody: synthetic peptide directed towards the N terminal of human CLIC4. Synthetic peptide located within the following region: LSMPLNGLKEEDKEPLIELFVKAGSDGESIGNCPFSQRLFMLWLKGVVF
Formulation:	Liquid. Purified antibody supplied in 1x PBS buffer with 0.09% (w/v) sodium azide and 2% sucrose. <i>Note that this product is shipped as lyophilized powder to China customers.</i>
Concentration:	lot specific
Purification:	Protein A purified
Conjugation:	Unconjugated
Storage:	Store at -20°C as received.
Stability:	Stable for 12 months from date of receipt.
Predicted Protein Size:	28 kDa
Gene Name:	chloride intracellular channel 4
Database Link:	NP_039234 Entrez Gene 25932 Human Q9Y696



[View online »](#)

Background:	Chloride channels are a diverse group of proteins that regulate fundamental cellular processes including stabilization of cell membrane potential, transepithelial transport, maintenance of intracellular pH, and regulation of cell volume. Chloride intracellular channel 4 (CLIC4) protein, encoded by the CLIC4 gene, is a member of the p64 family; the gene is expressed in many tissues and exhibits a intracellular vesicular pattern in Panc-1 cells (pancreatic cancer cells). [provided by RefSeq, Jul 2008]
Synonyms:	CLIC4L; H1; huH1; MTCLIC; p64H1
Note:	Immunogen Sequence Homology: Pig: 100%; Rat: 100%; Human: 100%; Mouse: 100%; Guinea pig: 100%; Bovine: 93%; Dog: 92%; Zebrafish: 82%
Protein Families:	Druggable Genome, Ion Channels: Other

Product images:

WB Suggested Anti-CLIC4 Antibody Titration: 2.5 ug/ml; ELISA Titer: 1:62500; Positive Control: Jurkat cell lysate