

Product datasheet for **TA338568**

KCNH3 Rabbit Polyclonal Antibody

Product data:

Product Type:	Primary Antibodies
Applications:	WB
Recommended Dilution:	WB
Reactivity:	Human
Host:	Rabbit
Isotype:	IgG
Clonality:	Polyclonal
Immunogen:	The immunogen for anti-KCNH3 antibody: synthetic peptide directed towards the middle region of human KCNH3. Synthetic peptide located within the following region: SGDNTLMSTLEEKETDGEQGPTVSPAPADEPSSPLLSPGCTSSSSAAKLL
Formulation:	Liquid. Purified antibody supplied in 1x PBS buffer with 0.09% (w/v) sodium azide and 2% sucrose. <i>Note that this product is shipped as lyophilized powder to China customers.</i>
Concentration:	lot specific
Purification:	Protein A purified
Conjugation:	Unconjugated
Storage:	Store at -20°C as received.
Stability:	Stable for 12 months from date of receipt.
Predicted Protein Size:	117 kDa
Gene Name:	potassium voltage-gated channel subfamily H member 3
Database Link:	NP_036416 Entrez Gene 23416 Human Q9ULD8
Background:	Pore-forming (alpha) subunit of voltage-gated potassium channel. Elicits an outward current with fast inactivation. Channel properties may be modulated by cAMP and subunit assembly.
Synonyms:	BEC1; ELK2; Kv12.2

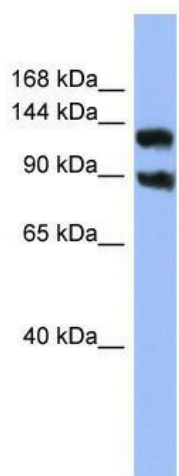


[View online »](#)

Note: Immunogen Sequence Homology: Horse: 100%; Human: 100%; Rabbit: 100%; Dog: 93%; Pig: 93%; Mouse: 93%; Guinea pig: 93%; Rat: 86%; Bovine: 86%

Protein Families: Druggable Genome, Ion Channels: Potassium, Transmembrane

Product images:



WB Suggested Anti-KCNH3 Antibody Titration:
0.2-1 ug/ml; ELISA Titer: 1:12500; Positive Control:
OVCAR-3 cell lysate