

Product datasheet for **TA338564**

TRPA1 Rabbit Polyclonal Antibody

Product data:

Product Type:	Primary Antibodies
Applications:	IHC, WB
Recommended Dilution:	WB, IHC, IF
Reactivity:	Rat, Human, Mouse
Host:	Rabbit
Isotype:	IgG
Clonality:	Polyclonal
Immunogen:	The immunogen for anti-TRPA1 antibody: synthetic peptide directed towards the middle region of human TRPA1. Synthetic peptide located within the following region: KCTDRLDEDGNTALHFAAREGHAKAVALLLSHNADIVLNKQASFLHLAL
Formulation:	Liquid. Purified antibody supplied in 1x PBS buffer with 0.09% (w/v) sodium azide and 2% sucrose. <i>Note that this product is shipped as lyophilized powder to China customers.</i>
Concentration:	lot specific
Purification:	Protein A purified
Conjugation:	Unconjugated
Storage:	Store at -20°C as received.
Stability:	Stable for 12 months from date of receipt.
Predicted Protein Size:	127 kDa
Gene Name:	transient receptor potential cation channel subfamily A member 1
Database Link:	NP_015628 Entrez Gene 277328 Mouse Entrez Gene 312896 Rat Entrez Gene 8989 Human O75762
Background:	The structure of the protein encoded by this gene is highly related to both the protein ankyrin and transmembrane proteins. The specific function of this protein has not yet been determined; however, studies indicate the function may involve a role in signal transduction and growth control. [provided by RefSeq, Jul 2008]
Synonyms:	ANKTM1; FEPS

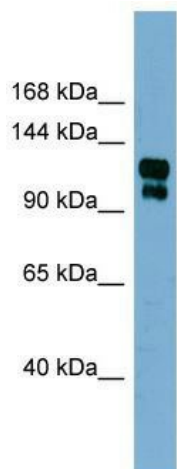


[View online »](#)

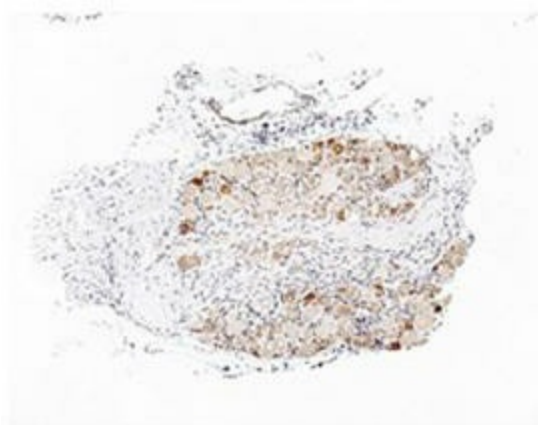
Note: Immunogen Sequence Homology: Rat: 100%; Human: 100%; Mouse: 100%; Yeast: 100%; Pig: 93%; Bovine: 93%; Rabbit: 93%; Guinea pig: 93%; Dog: 90%; Horse: 86%

Protein Families: Druggable Genome, Ion Channels: Transient receptor potential, Transmembrane

Product images:



WB Suggested Anti-TRPA1 Antibody Titration: 0.2-1 ug/ml; ELISA Titer: 1:312500; Positive Control: Human Stomach



Immunohistochemistry with rat sensory ganglia tissue