

Product datasheet for TA338562

CACNG3 Rabbit Polyclonal Antibody

Product data:

Product Type:	Primary Antibodies
Applications:	WB
Recommended Dilution:	WB
Reactivity:	Mouse
Host:	Rabbit
Isotype:	IgG
Clonality:	Polyclonal
Immunogen:	The immunogen for anti-Cacng3 antibody: synthetic peptide corresponding to a region of Mouse. Synthetic peptide located within the following region: GDPGQRDSKKSYSYGWSFYFGAFSFIIEIVGVVAVHIYIEKHQQLRARS
Formulation:	Liquid. Purified antibody supplied in 1x PBS buffer with 0.09% (w/v) sodium azide and 2% sucrose. <i>Note that this product is shipped as lyophilized powder to China customers.</i>
Concentration:	lot specific
Purification:	Protein A purified
Conjugation:	Unconjugated
Storage:	Store at -20°C as received.
Stability:	Stable for 12 months from date of receipt.
Predicted Protein Size:	35 kDa
Gene Name:	calcium voltage-gated channel auxiliary subunit gamma 3
Database Link:	NP_006530 Entrez Gene 54376 Mouse O60359
Background:	Regulates the trafficking and gating properties of AMPA-selective glutamate receptors (AMPA receptors). Promotes their targeting to the cell membrane and synapses and modulates their gating properties by slowing their rates of activation, deactivation and desensitization. Does not show subunit-specific AMPA receptor regulation and regulates all AMPAR subunits. Thought to stabilize the calcium channel in an inactivated (closed) state.



[View online »](#)

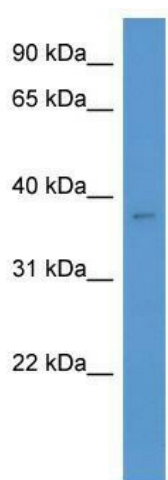
Synonyms: Cacng2; calcium channel; gamma subunit 3; neuronal voltage-gated calcium channel gamma-3 subunit; voltage-dependent; voltage-dependent calcium channel gamma-3 subunit; voltage-gated calcium channel gamma subunit

Note: Immunogen Sequence Homology: Dog: 100%; Pig: 100%; Rat: 100%; Horse: 100%; Human: 100%; Mouse: 100%; Bovine: 100%; Rabbit: 100%; Guinea pig: 100%; Zebrafish: 93%

Protein Families: Druggable Genome, Ion Channels: Other, Transmembrane

Protein Pathways: Arrhythmogenic right ventricular cardiomyopathy (ARVC), Cardiac muscle contraction, Dilated cardiomyopathy, Hypertrophic cardiomyopathy (HCM), MAPK signaling pathway

Product images:



WB Suggested Anti-Cacng3 Antibody Titration:
0.2-1 ug/ml; ELISA Titer: 1:12500; Positive Control:
Mouse Liver