

Product datasheet for **TA338561**

CLCA2 Rabbit Polyclonal Antibody

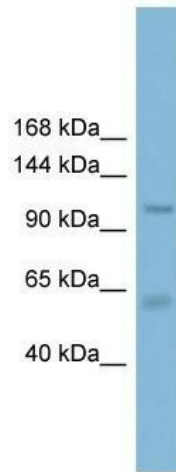
Product data:

Product Type:	Primary Antibodies
Applications:	WB
Recommended Dilution:	WB
Reactivity:	Human
Host:	Rabbit
Isotype:	IgG
Clonality:	Polyclonal
Immunogen:	The immunogen for anti-CLCA2 antibody: synthetic peptide directed towards the C terminal of human CLCA2. Synthetic peptide located within the following region: RYFFSFAANGRYSLKVHVNHSPSISTPAHSIPGSHAMYVPGYTANGNIQM
Formulation:	Liquid. Purified antibody supplied in 1x PBS buffer with 0.09% (w/v) sodium azide and 2% sucrose. <i>Note that this product is shipped as lyophilized powder to China customers.</i>
Concentration:	lot specific
Purification:	Protein A purified
Conjugation:	Unconjugated
Storage:	Store at -20°C as received.
Stability:	Stable for 12 months from date of receipt.
Predicted Protein Size:	104 kDa
Gene Name:	chloride channel accessory 2
Database Link:	NP_006527 Entrez Gene 9635 Human Q9UQC9



[View online »](#)

- Background:** The protein encoded by this gene belongs to the calcium sensitive chloride conductance protein family. To date, all members of this gene family map to the same site on chromosome 1p31-p22 and share high degrees of homology in size, sequence and predicted structure, but differ significantly in their tissue distributions. Since this protein is expressed predominantly in trachea and lung, it is suggested to play a role in the complex pathogenesis of cystic fibrosis. It may also serve as adhesion molecule for lung metastatic cancer cells, mediating vascular arrest and colonization, and furthermore, it has been implicated to act as a tumor suppressor gene for breast cancer. [provided by RefSeq, Jul 2008]
- Synonyms:** CACC; CaCC-3; CACC3; CLCRG2
- Note:** Immunogen Sequence Homology: Human: 100%; Bovine: 100%; Rat: 93%; Rabbit: 92%; Dog: 85%; Horse: 85%; Mouse: 79%; Pig: 77%
- Protein Families:** Druggable Genome, Ion Channels: Other, Transmembrane
- Protein Pathways:** Olfactory transduction
- Product images:**



WB Suggested Anti-CLCA2 Antibody Titration: 0.2-1 ug/ml; ELISA Titer: 1:312500; Positive Control: THP-1 cell lysate