

## Product datasheet for **TA338560**

### PKDREJ Rabbit Polyclonal Antibody

#### Product data:

Product Type:	Primary Antibodies
Applications:	WB
Recommended Dilution:	WB
Reactivity:	Human
Host:	Rabbit
Isotype:	IgG
Clonality:	Polyclonal
Immunogen:	The immunogen for anti-PKDREJ antibody: synthetic peptide directed towards the middle region of human PKDREJ. Synthetic peptide located within the following region: GVADNGSVLEITPDVAEVYLVRKNLTFAAFNLTVGPNSEVDGSLKKTGG
Formulation:	Liquid. Purified antibody supplied in 1x PBS buffer with 0.09% (w/v) sodium azide and 2% sucrose.
Concentration:	lot specific
Purification:	Protein A purified
Conjugation:	Unconjugated
Storage:	Store at -20°C as received.
Stability:	Stable for 12 months from date of receipt.
Predicted Protein Size:	254 kDa
Gene Name:	polycystin (PKD) family receptor for egg jelly
Database Link:	<a href="#">NP_006062</a> <a href="#">Entrez Gene 10343 Human</a> <a href="#">Q9NTG1</a>
Background:	This intronless gene encodes a member of the polycystin protein family. The encoded protein contains 11 transmembrane domains, a receptor for egg jelly (REJ) domain, a G-protein-coupled receptor proteolytic site (GPS) domain, and a polycystin-1, lipoxygenase, alpha-toxin (PLAT) domain. This protein may play a role in human reproduction. Alternative splice variants have been described but their biological natures have not been determined. [provided by RefSeq, Jul 2008]



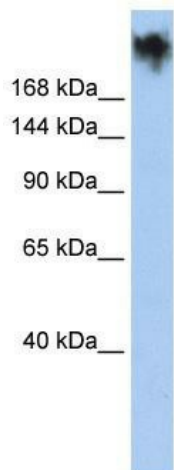
[View online »](#)

**Synonyms:** OTTHUMP00000028714; polycystic kidney disease (polycystin) and REJ (sperm receptor for egg jelly; polycystic kidney disease (polycystin) and REJ (sperm receptor for egg jelly homolog; receptor for egg jelly-like; sea urchin)-like; sea urchin homolog)-like

**Note:** Immunogen Sequence Homology: Human: 100%

**Protein Families:** Druggable Genome, Transmembrane

### Product images:



WB Suggested Anti-PKDREJ Antibody Titration:  
0.2-1 ug/ml; ELISA Titer: 1:12500; Positive Control:  
HepG2 cell lysate