

Product datasheet for **TA338559**

HTR3B Rabbit Polyclonal Antibody

Product data:

Product Type:	Primary Antibodies
Applications:	IF, IHC, WB
Recommended Dilution:	WB, IHC, IF
Reactivity:	Human, Mouse
Host:	Rabbit
Isotype:	IgG
Clonality:	Polyclonal
Immunogen:	The immunogen for anti-HTR3B antibody: synthetic peptide directed towards the N terminal of human HTR3B. Synthetic peptide located within the following region: PLWACILVAAGILATDTHHPQDSALYHLSKQLLQKYHKEVRPVYNWTKAT
Formulation:	Liquid. Purified antibody supplied in 1x PBS buffer with 0.09% (w/v) sodium azide and 2% sucrose. <i>Note that this product is shipped as lyophilized powder to China customers.</i>
Concentration:	lot specific
Purification:	Protein A purified
Conjugation:	Unconjugated
Storage:	Store at -20°C as received.
Stability:	Stable for 12 months from date of receipt.
Predicted Protein Size:	49 kDa
Gene Name:	5-hydroxytryptamine receptor 3B
Database Link:	NP_006019 Entrez Gene 57014 Mouse Entrez Gene 9177 Human O95264



[View online »](#)

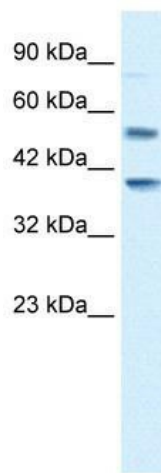
Background: The product of this gene belongs to the ligand-gated ion channel receptor superfamily. This gene encodes subunit B of the type 3 receptor for 5-hydroxytryptamine (serotonin), a biogenic hormone that functions as a neurotransmitter, a hormone, and a mitogen. This receptor causes fast, depolarizing responses in neurons after activation. It is not functional as a homomeric complex, but a pentaheteromeric complex with subunit A (HTR3A) displays the full functional features of this receptor. [provided by RefSeq, Aug 2011]

Synonyms: 5-HT3B

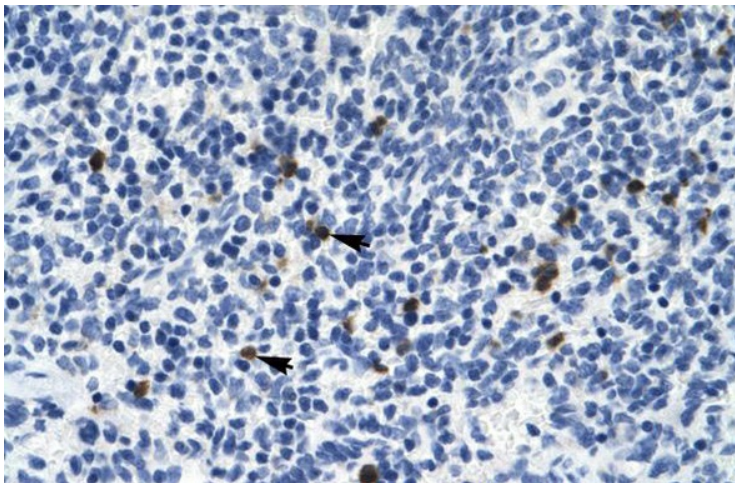
Note: Immunogen Sequence Homology: Human: 100%; Pig: 86%; Rabbit: 86%; Rat: 79%; Bovine: 79%; Guinea pig: 79%; Dog: 77%; Mouse: 77%

Protein Families: Druggable Genome, Ion Channels: Cys-loop Receptors, Transmembrane

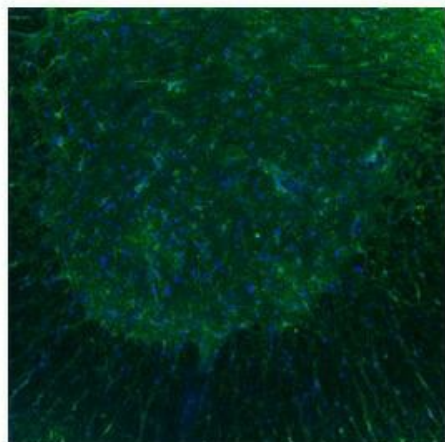
Product images:



WB Suggested Anti-HTR3B Antibody Titration: 0.2-1 ug/ml; ELISA Titer: 1:312500; Positive Control: Jurkat cell lysate



Rabbit Anti-HTR3B Antibody; Paraffin Embedded Tissue: Human Spleen; Cellular Data: Spleen cells; Antibody Concentration: 4.0-8.0 ug/ml; Magnification: 400X



Sample Type : Spinal Cord, ventral horns;