

## Product datasheet for **TA338548**

### **Kv4.3 (KCND3) Rabbit Polyclonal Antibody**

#### **Product data:**

Product Type:	Primary Antibodies
Applications:	WB
Recommended Dilution:	WB
Reactivity:	Human, Rat
Host:	Rabbit
Isotype:	IgG
Clonality:	Polyclonal
Immunogen:	The immunogen for anti-KCND3 antibody: synthetic peptide directed towards the middle region of human KCND3. Synthetic peptide located within the following region: KARLARIRVAKTGSSNAYLHSKRNGLLNEALELTGTPEEEHMGKTTSLIE
Formulation:	Liquid. Purified antibody supplied in 1x PBS buffer with 0.09% (w/v) sodium azide and 2% sucrose. <i>Note that this product is shipped as lyophilized powder to China customers.</i>
Concentration:	lot specific
Purification:	Protein A purified
Conjugation:	Unconjugated
Storage:	Store at -20°C as received.
Stability:	Stable for 12 months from date of receipt.
Predicted Protein Size:	70 kDa
Gene Name:	potassium voltage-gated channel subfamily D member 3
Database Link:	<a href="#">NP_751948</a> <a href="#">Entrez Gene 65195 Rat</a> <a href="#">Entrez Gene 3752 Human</a> <a href="#">Q9UK17</a>



[View online »](#)

**Background:**

Voltage-gated potassium (Kv) channels represent the most complex class of voltage-gated ion channels from both functional and structural standpoints. Their diverse functions include regulating neurotransmitter release, heart rate, insulin secretion, neuronal excitability, epithelial electrolyte transport, smooth muscle contraction, and cell volume. Four sequence-related potassium channel genes - shaker, shaw, shab, and shal - have been identified in *Drosophila*, and each has been shown to have human homolog(s). This gene encodes a member of the potassium channel, voltage-gated, shal-related subfamily, members of which form voltage-activated A-type potassium ion channels and are prominent in the repolarization phase of the action potential. This member includes two isoforms with different sizes, which are encoded by alternatively spliced transcript variants of this gene. [provided by RefSeq, Jul 2008]

**Synonyms:**

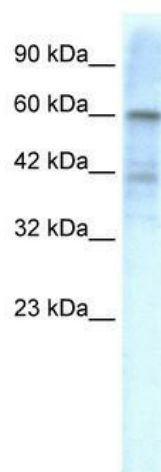
KCND3L; KCND3S; KSHIVB; KV4.3; SCA19; SCA22

**Note:**

Immunogen Sequence Homology: Pig: 100%; Rat: 100%; Human: 100%; Rabbit: 100%; Guinea pig: 100%; Horse: 93%; Mouse: 93%; Dog: 92%; Bovine: 92%

**Protein Families:**

Druggable Genome, Ion Channels: Potassium, Transmembrane

**Product images:**

WB Suggested Anti-KCND3 Antibody Titration:  
1.25 ug/ml; ELISA Titer: 1:12500; Positive Control:  
HepG2 cell lysate