

Product datasheet for **TA338546**

KCNC4 Rabbit Polyclonal Antibody

Product data:

Product Type:	Primary Antibodies
Applications:	IHC, WB
Recommended Dilution:	WB, IHC
Reactivity:	Human
Host:	Rabbit
Isotype:	IgG
Clonality:	Polyclonal
Immunogen:	The immunogen for anti-KCNC4 antibody: synthetic peptide directed towards the middle region of human KCNC4. Synthetic peptide located within the following region: NIDRNVTEILRVGNITSVHFRREVETEPILTYIEGVCVLWFTLEFLVRIV
Formulation:	Liquid. Purified antibody supplied in 1x PBS buffer with 0.09% (w/v) sodium azide and 2% sucrose. <i>Note that this product is shipped as lyophilized powder to China customers.</i>
Concentration:	lot specific
Purification:	Protein A purified
Conjugation:	Unconjugated
Storage:	Store at -20°C as received.
Stability:	Stable for 12 months from date of receipt.
Predicted Protein Size:	64 kDa
Gene Name:	potassium voltage-gated channel subfamily C member 4
Database Link:	NP_720198 Entrez Gene 3749 Human Q03721



[View online »](#)

Background:

The Shaker gene family of *Drosophila* encodes components of voltage-gated potassium channels and is comprised of four subfamilies. Based on sequence similarity, this gene is similar to the Shaw subfamily. The protein encoded by this gene belongs to the delayed rectifier class of channel proteins and is an integral membrane protein that mediates the voltage-dependent potassium ion permeability of excitable membranes. It generates atypical voltage-dependent transient current that may be important for neuronal excitability. Multiple transcript variants have been found for this gene. [provided by RefSeq, Jul 2010]

Synonyms:

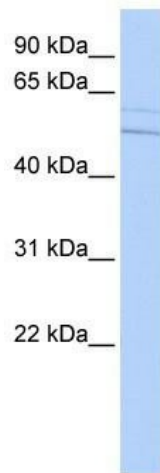
HKSHIIIC; KSHIIIC; KV3.4; MGC126818

Note:

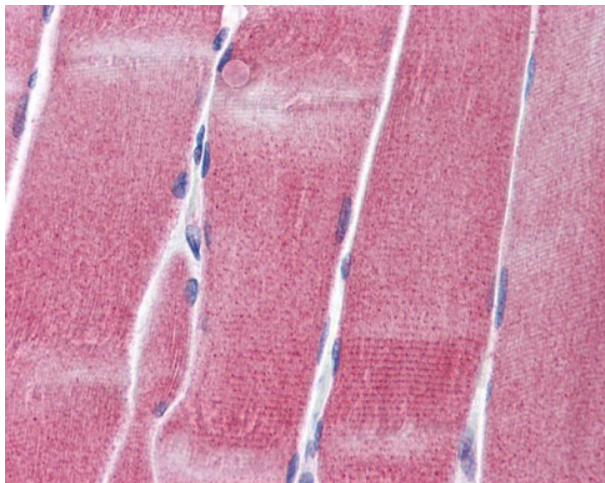
Immunogen Sequence Homology: Rat: 100%; Human: 100%; Dog: 93%; Pig: 93%; Mouse: 93%; Rabbit: 93%; Guinea pig: 93%; Horse: 86%; Bovine: 86%

Protein Families:

Druggable Genome, Ion Channels: Potassium, Transmembrane

Product images:

WB Suggested Anti-KCNC4 Antibody Titration:
0.2-1 ug/ml; ELISA Titer: 1:312500; Positive
Control: HepG2 cell lysate



Skeletal muscle