

## Product datasheet for **TA338545**

### KCNC3 Rabbit Polyclonal Antibody

#### Product data:

Product Type:	Primary Antibodies
Applications:	WB
Recommended Dilution:	WB
Reactivity:	Human
Host:	Rabbit
Isotype:	IgG
Clonality:	Polyclonal
Immunogen:	The immunogen for anti-KCNC3 antibody: synthetic peptide directed towards the middle region of human KCNC3. Synthetic peptide located within the following region: YAERIGADPDDILGSNHTYFKNIPIGFWWAWVTMTTLGYGDMYPKTWSGM
Formulation:	Liquid. Purified antibody supplied in 1x PBS buffer with 0.09% (w/v) sodium azide and 2% sucrose. <i>Note that this product is shipped as lyophilized powder to China customers.</i>
Concentration:	lot specific
Purification:	Protein A purified
Conjugation:	Unconjugated
Storage:	Store at -20°C as received.
Stability:	Stable for 12 months from date of receipt.
Predicted Protein Size:	80 kDa
Gene Name:	potassium voltage-gated channel subfamily C member 3
Database Link:	<a href="#">NP_004968</a> <a href="#">Entrez Gene 3748 Human</a> <a href="#">Q14003</a>



[View online »](#)

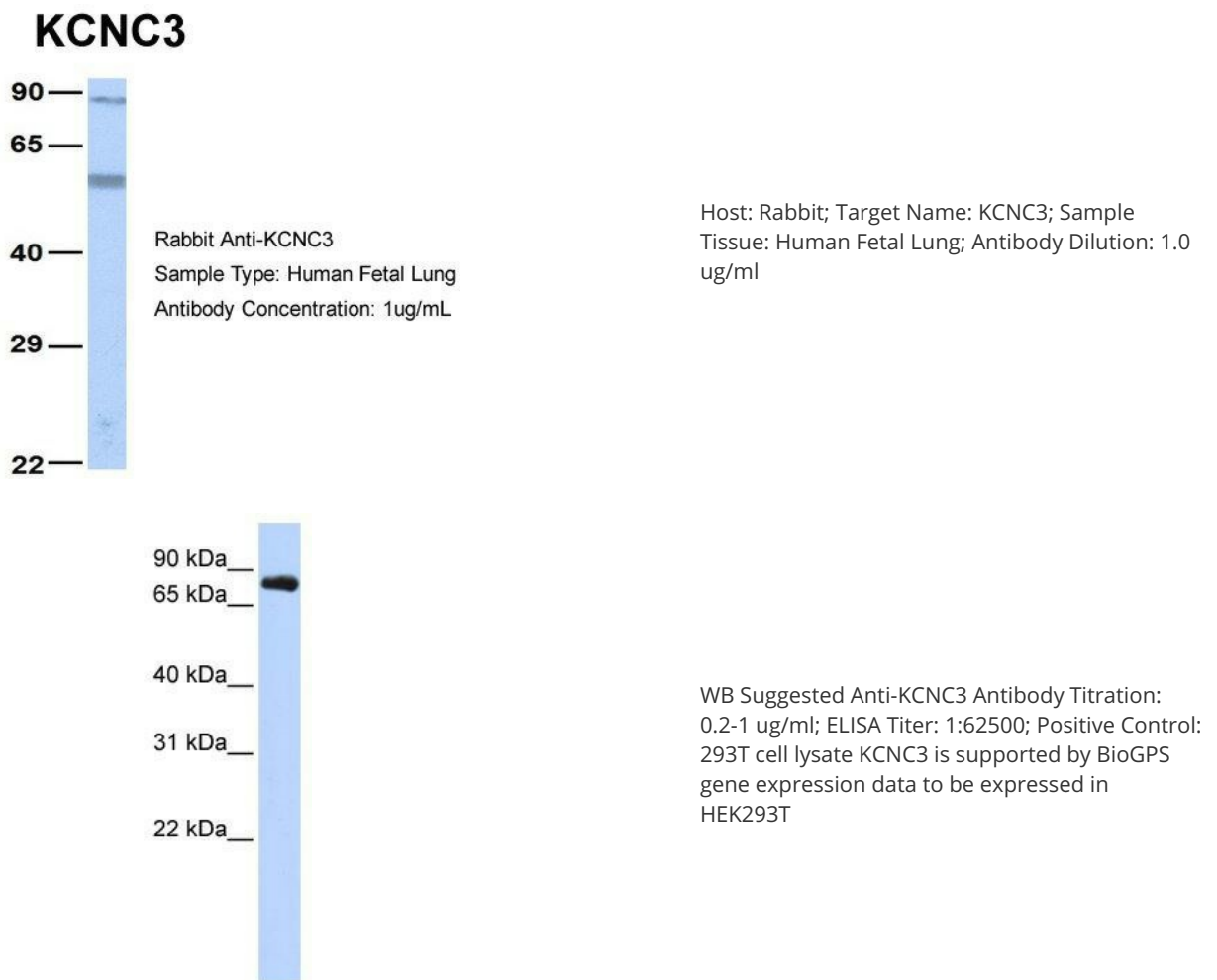
**Background:** The Shaker gene family of Drosophila encodes components of voltage-gated potassium channels and is comprised of four subfamilies. Based on sequence similarity, this gene is similar to one of these subfamilies, namely the Shaw subfamily. The protein encoded by this gene belongs to the delayed rectifier class of channel proteins and is an integral membrane protein that mediates the voltage-dependent potassium ion permeability of excitable membranes. Alternate splicing results in several transcript variants. [provided by RefSeq, Mar 2014]

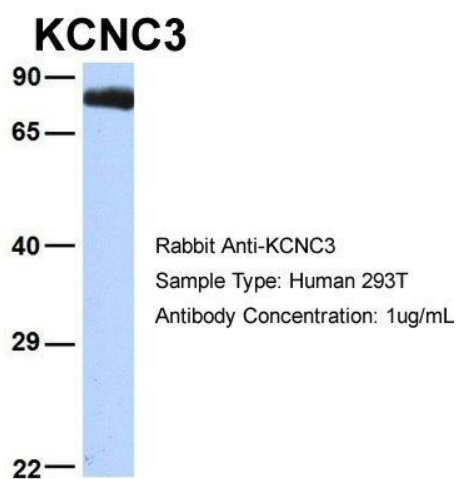
**Synonyms:** KSHIID; KV3.3; SCA13

**Note:** Immunogen Sequence Homology: Pig: 100%; Rat: 100%; Human: 100%; Mouse: 100%; Rabbit: 100%; Guinea pig: 100%; Bovine: 93%

**Protein Families:** Druggable Genome, Ion Channels: Potassium, Transmembrane

**Product images:**





Host: Rabbit; Target Name: KCNC3; Sample Tissue: 293T; Antibody Dilution: 1.0 ug/ml KCNC3 is supported by BioGPS gene expression data to be expressed in HEK293T