

Product datasheet for **TA338540**

TRPC6 Rabbit Polyclonal Antibody

Product data:

Product Type:	Primary Antibodies
Applications:	WB
Recommended Dilution:	WB
Reactivity:	Human, Rat
Host:	Rabbit
Isotype:	IgG
Clonality:	Polyclonal
Immunogen:	The immunogen for anti-TRPC6 antibody: synthetic peptide directed towards the middle region of human TRPC6. Synthetic peptide located within the following region: KKGFDQAEMNKINEEKKLGILGSHEDLSKLSLDKKQVGHNKQPSIRSSE
Formulation:	Liquid. Purified antibody supplied in 1x PBS buffer with 0.09% (w/v) sodium azide and 2% sucrose. <i>Note that this product is shipped as lyophilized powder to China customers.</i>
Concentration:	lot specific
Purification:	Protein A purified
Conjugation:	Unconjugated
Storage:	Store at -20°C as received.
Stability:	Stable for 12 months from date of receipt.
Predicted Protein Size:	106 kDa
Gene Name:	transient receptor potential cation channel subfamily C member 6
Database Link:	NP_004612 Entrez Gene 89823 Rat Entrez Gene 7225 Human Q9Y210



[View online »](#)

Background:

The protein encoded by this gene forms a receptor-activated calcium channel in the cell membrane. The channel is activated by diacylglycerol and is thought to be under the control of a phosphatidylinositol second messenger system. Activation of this channel occurs independently of protein kinase C and is not triggered by low levels of intracellular calcium. Defects in this gene are a cause of focal segmental glomerulosclerosis 2 (FSGS2). [provided by RefSeq, Mar 2009]

Synonyms:

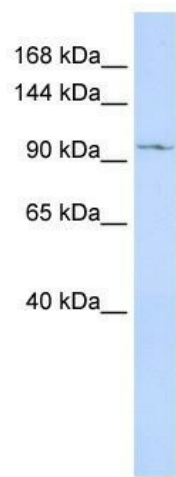
FSGS2; TRP6

Note:

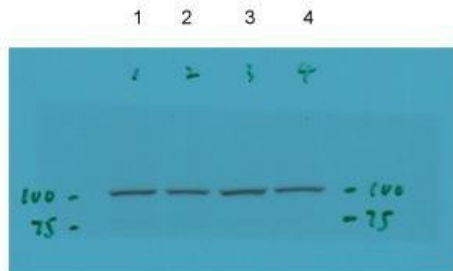
Immunogen Sequence Homology: Pig: 100%; Human: 100%; Dog: 92%; Horse: 92%; Bovine: 92%; Guinea pig: 92%; Yeast: 86%; Mouse: 85%; Rat: 77%

Protein Families:

Druggable Genome, Ion Channels: Transient receptor potential, Transmembrane

Product images:


WB Suggested Anti-TRPC6 Antibody Titration: 0.2-1 ug/ml; ELISA Titer: 1:312500; Positive Control: MCF7 cell lysate



Lane 1: Normoxia Control (16% O₂)

Lane 2: CPT-cGMP (100uM) 60-hour treatment under Normoxia (16% O₂)

Lane 3: Hypoxia Control (4% O₂)

Lane 4: CPT-cGMP (100uM) 60-hour treatment under Hypoxia (4% O₂)

TRPC6 antibody - middle region validated by WB using pulmonary artery smooth muscle