

Product datasheet for **TA338529**

KCNN4 Rabbit Polyclonal Antibody

Product data:

Product Type:	Primary Antibodies
Applications:	WB
Recommended Dilution:	WB
Reactivity:	Human
Host:	Rabbit
Isotype:	IgG
Clonality:	Polyclonal
Immunogen:	The immunogen for anti-KCNN4 antibody: synthetic peptide directed towards the C terminal of human KCNN4. Synthetic peptide located within the following region: DLQQNLSSSHRALEKQIDTLAGKLDALTELLSTALGPRQLPEPSQQSK
Formulation:	Liquid. Purified antibody supplied in 1x PBS buffer with 0.09% (w/v) sodium azide and 2% sucrose. <i>Note that this product is shipped as lyophilized powder to China customers.</i>
Concentration:	lot specific
Purification:	Protein A purified
Conjugation:	Unconjugated
Storage:	Store at -20°C as received.
Stability:	Stable for 12 months from date of receipt.
Predicted Protein Size:	48 kDa
Gene Name:	potassium calcium-activated channel subfamily N member 4
Database Link:	NP_002241 Entrez Gene 3783 Human O15554



[View online »](#)

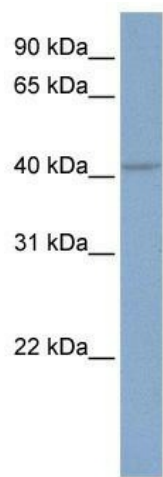
Background: The protein encoded by this gene is part of a potentially heterotetrameric voltage-independent potassium channel that is activated by intracellular calcium. Activation is followed by membrane hyperpolarization, which promotes calcium influx. The encoded protein may be part of the predominant calcium-activated potassium channel in T-lymphocytes. This gene is similar to other KCNN family potassium channel genes, but it differs enough to possibly be considered as part of a new subfamily. [provided by RefSeq, Jul 2008]

Synonyms: hIKCa1; hKCa4; hSK4; IK; IK1; IKCA1; KCa3.1; KCA4; SK4

Note: Immunogen Sequence Homology: Human: 100%; Rat: 92%; Horse: 92%; Bovine: 92%; Pig: 83%

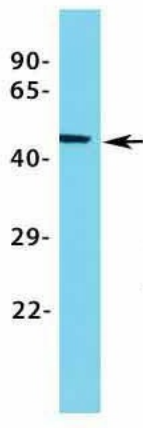
Protein Families: Druggable Genome, Ion Channels: Potassium, Transmembrane

Product images:



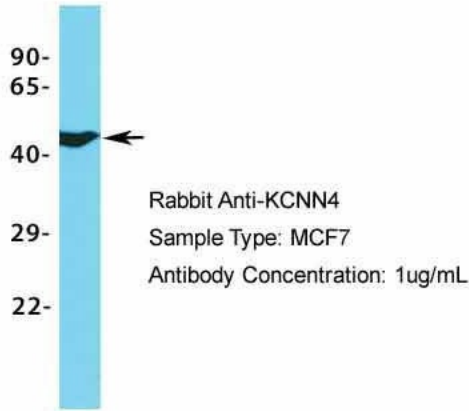
WB Suggested Anti-KCNN4 Antibody Titration:
0.2-1 ug/ml; ELISA Titer: 1:62500; Positive Control:
HepG2 cell lysate

KCNN4

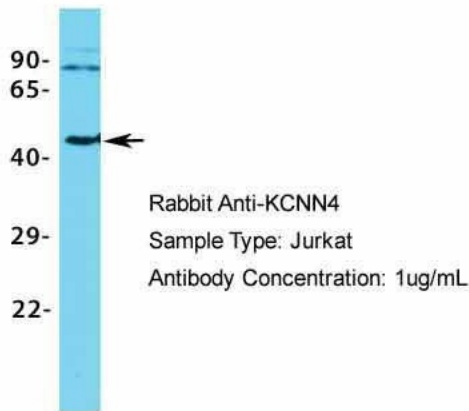


Rabbit Anti-KCNN4
Sample Type: HeLa
Antibody Concentration: 1ug/mL

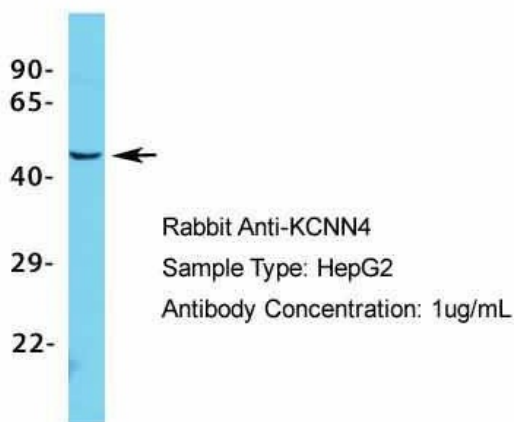
Host: Rabbit; Target Name: KCNN4; Sample
Tissue: HeLa; Antibody Dilution: 1.0 ug/ml

KCNN4

Host: Rabbit; Target Name: KCNN4; Sample Tissue: MCF7; Antibody Dilution: 1.0 ug/ml

KCNN4

Host: Rabbit; Target Name: KCNN4; Sample Tissue: Jurkat; Antibody Dilution: 1.0 ug/ml

KCNN4

Host: Rabbit; Target Name: KCNN4; Sample Tissue: HepG2; Antibody Dilution: 1.0 ug/ml