

## Product datasheet for **TA338527**

### KCNN1 Rabbit Polyclonal Antibody

#### Product data:

Product Type:	Primary Antibodies
Applications:	WB
Recommended Dilution:	WB
Reactivity:	Human
Host:	Rabbit
Isotype:	IgG
Clonality:	Polyclonal
Immunogen:	The immunogen for anti-KCNN1 antibody: synthetic peptide directed towards the C terminal of human KCNN1. Synthetic peptide located within the following region: KIEQGKLNDAQNTLTDLAKTQTVMYDLVSELHAQHHEELARLATLESRLD
Formulation:	Liquid. Purified antibody supplied in 1x PBS buffer with 0.09% (w/v) sodium azide and 2% sucrose. <i>Note that this product is shipped as lyophilized powder to China customers.</i>
Concentration:	lot specific
Purification:	Protein A purified
Conjugation:	Unconjugated
Storage:	Store at -20°C as received.
Stability:	Stable for 12 months from date of receipt.
Predicted Protein Size:	60 kDa
Gene Name:	potassium calcium-activated channel subfamily N member 1
Database Link:	<a href="#">NP_002239</a> <a href="#">Entrez Gene 3780 Human</a> <a href="#">Q92952</a>



[View online »](#)

**Background:**

Action potentials in vertebrate neurons are followed by an afterhyperpolarization (AHP) that may persist for several seconds and may have profound consequences for the firing pattern of the neuron. Each component of the AHP is kinetically distinct and is mediated by different calcium-activated potassium channels. The protein encoded by this gene is activated before membrane hyperpolarization and is thought to regulate neuronal excitability by contributing to the slow component of synaptic AHP. The encoded protein is an integral membrane protein that forms a voltage-independent calcium-activated channel with three other calmodulin-binding subunits. This gene is a member of the KCNN family of potassium channel genes. [provided by RefSeq, Jul 2008]

**Synonyms:**

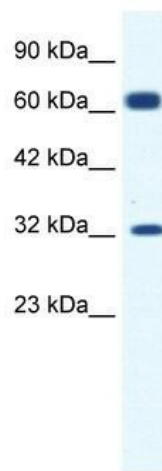
hSK1; KCa2.1; SK1; SKCA1

**Note:**

Immunogen Sequence Homology: Human: 100%; Dog: 93%; Pig: 93%; Bovine: 93%; Horse: 92%; Rat: 85%; Guinea pig: 79%

**Protein Families:**

Druggable Genome, Ion Channels: Potassium, Transmembrane

**Product images:**

WB Suggested Anti-KCNN1 Antibody Titration:  
1.25 ug/ml; ELISA Titer: 1:312500; Positive  
Control: Jurkat cell lysate