

Product datasheet for **TA338526**

KCNN2 Rabbit Polyclonal Antibody

Product data:

Product Type:	Primary Antibodies
Applications:	IHC, WB
Recommended Dilution:	IHC, WB
Reactivity:	Human, Rat, Macaque
Host:	Rabbit
Isotype:	IgG
Clonality:	Polyclonal
Immunogen:	The immunogen for anti-KCNN2 antibody: synthetic peptide directed towards the C terminal of human KCNN2. Synthetic peptide located within the following region: IDHAKVRKHQRKFLQAIHQLRSVKMEQRKLNDQANTLVDLAKTQNIMYDM
Formulation:	Liquid. Purified antibody supplied in 1x PBS buffer with 0.09% (w/v) sodium azide and 2% sucrose. <i>Note that this product is shipped as lyophilized powder to China customers.</i>
Concentration:	lot specific
Purification:	Protein A purified
Conjugation:	Unconjugated
Storage:	Store at -20°C as received.
Stability:	Stable for 12 months from date of receipt.
Predicted Protein Size:	64 kDa
Gene Name:	potassium calcium-activated channel subfamily N member 2
Database Link:	NP_067627 Entrez Gene 54262 Rat Entrez Gene 3781 Human Q9H2S1



[View online »](#)

Background:

Action potentials in vertebrate neurons are followed by an afterhyperpolarization (AHP) that may persist for several seconds and may have profound consequences for the firing pattern of the neuron. Each component of the AHP is kinetically distinct and is mediated by different calcium-activated potassium channels. The protein encoded by this gene is activated before membrane hyperpolarization and is thought to regulate neuronal excitability by contributing to the slow component of synaptic AHP. This gene is a member of the KCNN family of potassium channel genes. The encoded protein is an integral membrane protein that forms a voltage-independent calcium-activated channel with three other calmodulin-binding subunits. Alternate splicing of this gene results in multiple transcript variants. [provided by RefSeq, May 2013]

Synonyms:

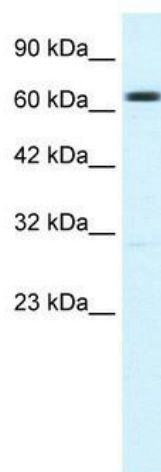
hSK2; KCa2.2; SK2; SKCA2; SKCa 2

Note:

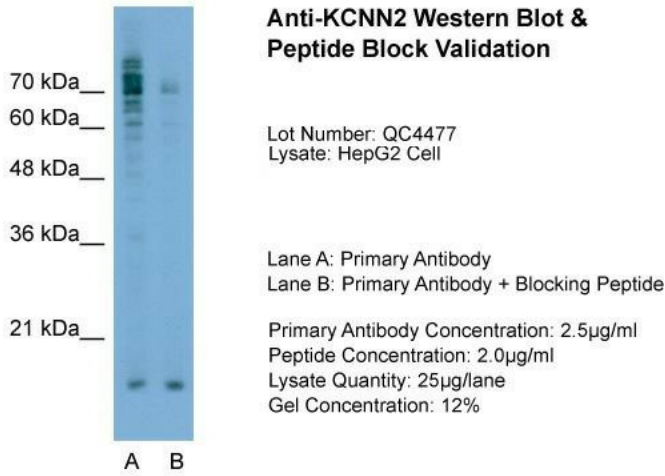
Immunogen Sequence Homology: Human: 100%; Yeast: 100%; Dog: 93%; Pig: 93%; Rat: 93%; Horse: 93%; Mouse: 93%; Bovine: 93%; Rabbit: 93%; Zebrafish: 93%; Guinea pig: 93%

Protein Families:

Druggable Genome, Ion Channels: Potassium, Transmembrane

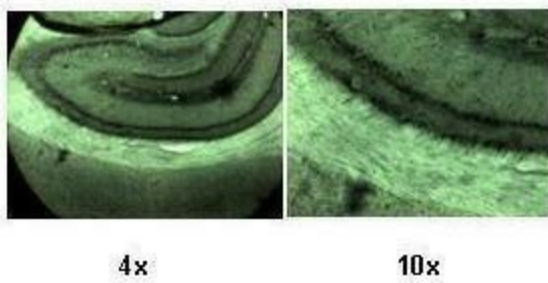
Product images:

WB Suggested Anti-KCNN2 Antibody Titration:
1.25 ug/ml; ELISA Titer: 1:62500; Positive Control:
HepG2 cell lysate

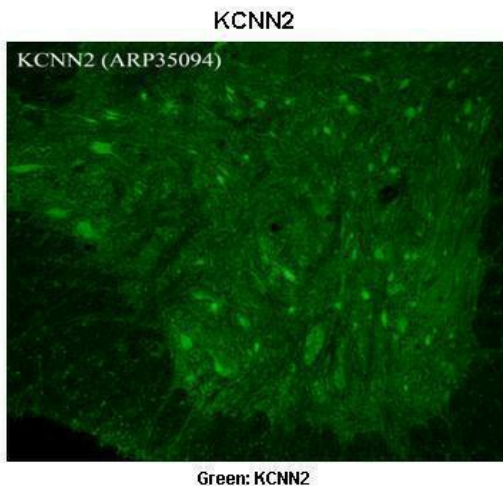


Host: Rabbit; Target Name: KCNN2; Sample Tissue: HepG2; Lane A: Primary Antibody; Lane B: Primary Antibody + Blocking Peptide ; Primary Antibody Concentration: 2.5ug/mL; Peptide Concentration: 2.0ug/mL; Lysate Quantity: 25ug/lane; Gel Concentration: 12%

KCNN2



Lanes ; Rat brain section; Primary Antibody Dilution: 1:500; Secondary Antibody: Anti-rabbit-biotin, streptavidin-diaminobenzidine; Secondary Antibody Dilution: 1:500; Gene Name: KCNN2; Submitted by: Dr. Amiel Rosenkranz, Rosalind Franklin University;



Sample Type. Rhesus macaque spinal cord
Primary Antibody Dilution. 1:300
Secondary Antibody. Donkey anti Rabbit 488
Secondary Antibody Dilution. 1:500
Color/Signal Descriptions. Green: KCNN2
Gene Name. KCNN2
Submitted by. Timur Mavlyutov, Ph. D., Depart