

## Product datasheet for **TA338525**

### KCNMA1 Rabbit Polyclonal Antibody

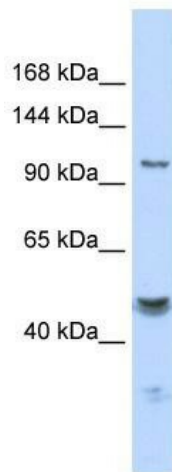
#### Product data:

Product Type:	Primary Antibodies
Applications:	IHC, WB
Recommended Dilution:	WB, IHC
Reactivity:	Human
Host:	Rabbit
Isotype:	IgG
Clonality:	Polyclonal
Immunogen:	The immunogen for anti-KCNMA1 antibody: synthetic peptide directed towards the c terminal region of human KCNMA1. Synthetic peptide located within the following region: CFGIYRLRDAHLSTPSQCTKRYVITNPPYEFELVPTDLIFCLMQFDHNAG
Formulation:	Liquid. Purified antibody supplied in 1x PBS buffer with 0.09% (w/v) sodium azide and 2% sucrose. <i>Note that this product is shipped as lyophilized powder to China customers.</i>
Concentration:	lot specific
Purification:	Protein A purified
Conjugation:	Unconjugated
Storage:	Store at -20°C as received.
Stability:	Stable for 12 months from date of receipt.
Predicted Protein Size:	131 kDa
Gene Name:	potassium calcium-activated channel subfamily M alpha 1
Database Link:	<a href="#">NP_001014797</a> <a href="#">Entrez Gene 3778 Human</a> <a href="#">Q12791</a>



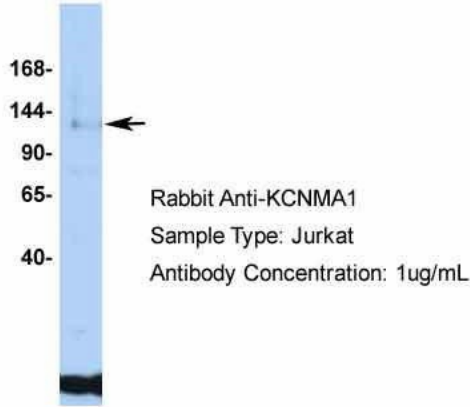
[View online »](#)

- Background:** MaxiK channels are large conductance, voltage and calcium-sensitive potassium channels which are fundamental to the control of smooth muscle tone and neuronal excitability. MaxiK channels can be formed by 2 subunits: the pore-forming alpha subunit, which is the product of this gene, and the modulatory beta subunit. Intracellular calcium regulates the physical association between the alpha and beta subunits. Alternatively spliced transcript variants encoding different isoforms have been identified. [provided by RefSeq, Jul 2008]
- Synonyms:** bA205K10.1; BKTM; hSlo; KCa1.1; MaxiK; mSLO1; SAKCA; SLO; SLO-ALPHA; SLO1
- Note:** Immunogen Sequence Homology: Dog: 100%; Pig: 100%; Rat: 100%; Horse: 100%; Human: 100%; Mouse: 100%; Sheep: 100%; Bovine: 100%; Rabbit: 100%; Guinea pig: 100%; Zebrafish: 93%
- Protein Families:** Druggable Genome, Ion Channels: Potassium, Transmembrane
- Protein Pathways:** Vascular smooth muscle contraction
- Product images:**



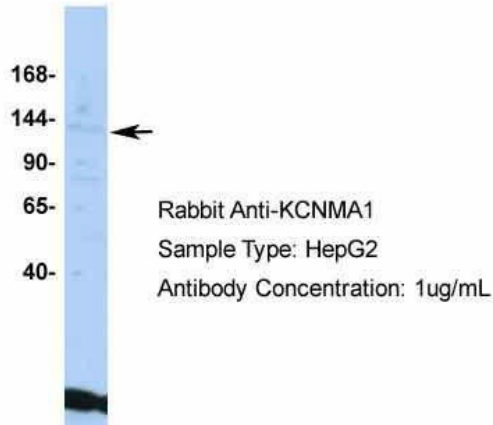
WB Suggested Anti-KCNMA1 Antibody Titration:  
0.2-1 ug/ml; ELISA Titer: 1:312500; Positive  
Control: Human Liver

## KCNMA1

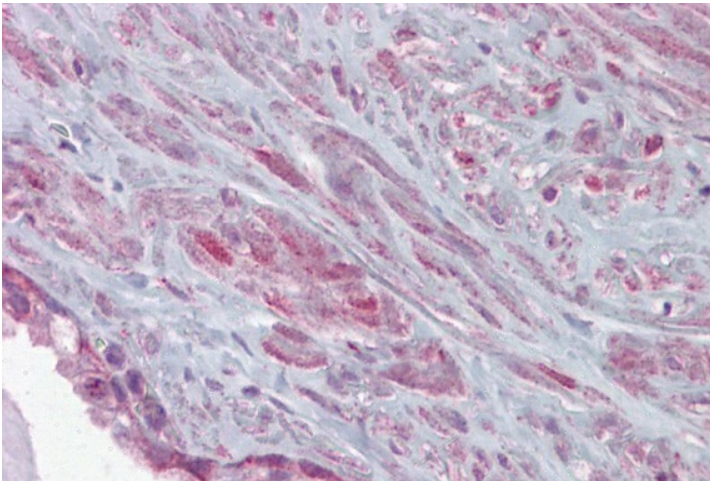


Host: Rabbit; Target Name: KCNMA1; Sample Tissue: Jurkat; Antibody Dilution: 1.0 µg/ml

## KCNMA1



Host: Rabbit; Target Name: KCNMA1; Sample Tissue: HepG2; Antibody Dilution: 1.0 µg/ml



Prostate