

Product datasheet for **TA338523**

KCNG1 Rabbit Polyclonal Antibody

Product data:

| | |
|-------------------------|---|
| Product Type: | Primary Antibodies |
| Applications: | WB |
| Recommended Dilution: | WB |
| Reactivity: | Human |
| Host: | Rabbit |
| Isotype: | IgG |
| Clonality: | Polyclonal |
| Immunogen: | The immunogen for anti-KCNG1 antibody: synthetic peptide directed towards the N terminal of human KCNG1. Synthetic peptide located within the following region: MTLLPGDNSDYDYSALSCTSDASFHPAFLPQRQAIKGAFYRRAQRLRPQD |
| Formulation: | Liquid. Purified antibody supplied in 1x PBS buffer with 0.09% (w/v) sodium azide and 2% sucrose. <i>Note that this product is shipped as lyophilized powder to China customers.</i> |
| Concentration: | lot specific |
| Purification: | Protein A purified |
| Conjugation: | Unconjugated |
| Storage: | Store at -20°C as received. |
| Stability: | Stable for 12 months from date of receipt. |
| Predicted Protein Size: | 56 kDa |
| Gene Name: | potassium voltage-gated channel modifier subfamily G member 1 |
| Database Link: | NP_002228 Entrez Gene 3755 Human Q9UIX4 |



[View online »](#)

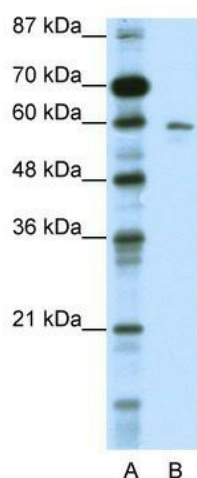
Background: Voltage-gated potassium (Kv) channels represent the most complex class of voltage-gated ion channels from both functional and structural standpoints. Their diverse functions include regulating neurotransmitter release, heart rate, insulin secretion, neuronal excitability, epithelial electrolyte transport, smooth muscle contraction, and cell volume. This gene encodes a member of the potassium channel, voltage-gated, subfamily G. This gene is abundantly expressed in skeletal muscle. Multiple alternatively spliced transcript variants have been found in normal and cancerous tissues. [provided by RefSeq, Jul 2008]

Synonyms: K13; KCNG; KH2; KV6.1

Note: Immunogen Sequence Homology: Human: 100%; Dog: 92%; Pig: 86%; Rat: 86%; Mouse: 86%; Bovine: 86%; Guinea pig: 86%; Rabbit: 83%; Horse: 79%

Protein Families: Druggable Genome, Ion Channels: Potassium, Transmembrane

Product images:



WB Suggested Anti-KCNG1 Antibody Titration:
0.2-1 ug/ml; ELISA Titer: 1:62500; Positive Control:
HepG2 cell lysate