

## Product datasheet for TA338522

### GABRR2 Rabbit Polyclonal Antibody

#### Product data:

Product Type:	Primary Antibodies
Applications:	WB
Recommended Dilution:	WB
Reactivity:	Human
Host:	Rabbit
Isotype:	IgG
Clonality:	Polyclonal
Immunogen:	The immunogen for anti-GABRR2 antibody: synthetic peptide directed towards the middle region of human GABRR2. Synthetic peptide located within the following region: SNKSMTFDGRLVKKIWVPDVFFVHSKRSFTHDTTTTDNIMLRVFPDGHVLY
Formulation:	Liquid. Purified antibody supplied in 1x PBS buffer with 0.09% (w/v) sodium azide and 2% sucrose. <i>Note that this product is shipped as lyophilized powder to China customers.</i>
Concentration:	lot specific
Purification:	Protein A purified
Conjugation:	Unconjugated
Storage:	Store at -20°C as received.
Stability:	Stable for 12 months from date of receipt.
Predicted Protein Size:	54 kDa
Gene Name:	gamma-aminobutyric acid type A receptor rho2 subunit
Database Link:	<a href="#">NP_002034</a> <a href="#">Entrez Gene 2570 Human P28476</a>
Background:	GABA is the major inhibitory neurotransmitter in the mammalian brain where it acts at GABA receptors, which are ligand-gated chloride channels. The protein encoded by this gene is a member of the rho subunit family and is a component of the GABA receptor complex. [provided by RefSeq, Jul 2008]



[View online »](#)

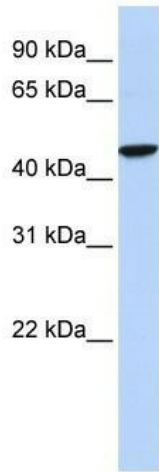
**Synonyms:** GABA-C receptor; gamma-aminobutyric acid (GABA) receptor; OTTHUMP00000040625; rho-2 subunit; rho 2

**Note:** Immunogen Sequence Homology: Dog: 100%; Rat: 100%; Human: 100%; Pig: 93%; Horse: 93%; Mouse: 93%; Bovine: 93%; Rabbit: 93%; Zebrafish: 93%; Guinea pig: 93%

**Protein Families:** Druggable Genome, Ion Channels: Cys-loop Receptors, Transmembrane

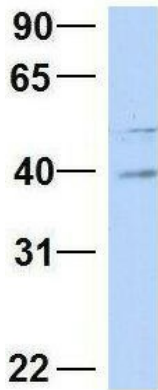
**Protein Pathways:** Neuroactive ligand-receptor interaction

**Product images:**



WB Suggested Anti-GABRR2 Antibody Titration:  
0.2-1 ug/ml; ELISA Titer: 1:312500; Positive  
Control: Hela cell lysate

**GABRR2**



Rabbit Anti-GABRR2  
Sample Type: Human Fetal Brain  
Antibody Concentration: 1ug/mL

2Hum. Fetal Brain; Host: Rabbit; Target Name:  
NOP56; Sample Tissue: Human Fetal Brain;  
Antibody Dilution: 1.0 ug/ml

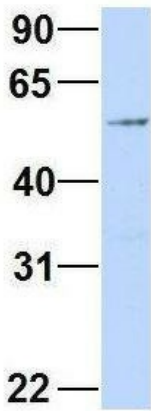
## GABRR2



Rabbit Anti-GABRR2  
Sample Type: Human Fetal Liver  
Antibody Concentration: 1ug/mL

3Hum. Fetal Liver; Host: Rabbit; Target Name:  
GABRR2; Sample Tissue: Human Fetal Liver;  
Antibody Dilution: 1.0 ug/ml

## GABRR2



Rabbit Anti-GABRR2  
Sample Type: Human 293T  
Antibody Concentration: 1ug/mL

4Human 293T; Host: Rabbit; Target Name:  
HIRIP3; Sample Tissue: 293T; Antibody Dilution:  
1.0 ug/ml GABRR2 is supported by BioGPS gene  
expression data to be expressed in HEK293T