

Product datasheet for **TA338520**

APXL (SHROOM2) Rabbit Polyclonal Antibody

Product data:

Product Type:	Primary Antibodies
Applications:	WB
Recommended Dilution:	WB
Reactivity:	Human
Host:	Rabbit
Isotype:	IgG
Clonality:	Polyclonal
Immunogen:	The immunogen for anti-SHROOM2 antibody: synthetic peptide directed towards the middle region of human SHROOM2. Synthetic peptide located within the following region: CTSPPGLSYMKAKEKTVEDLKSEELAREIVGKDKSLADILDPSVKIKTTM
Formulation:	Liquid. Purified antibody supplied in 1x PBS buffer with 0.09% (w/v) sodium azide and 2% sucrose.
Concentration:	lot specific
Purification:	Protein A purified
Conjugation:	Unconjugated
Storage:	Store at -20°C as received.
Stability:	Stable for 12 months from date of receipt.
Predicted Protein Size:	176 kDa
Gene Name:	shroom family member 2
Database Link:	NP_001640 Entrez Gene 357 Human Q13796
Background:	The protein encoded by this gene shares significant similarities with the apical protein from <i>Xenopus laevis</i> which is implicated in amiloride-sensitive sodium channel activity. This gene is a strong candidate gene for ocular albinism type 1 syndrome. [provided by RefSeq, Jul 2008]
Synonyms:	APXL; HSAPXL

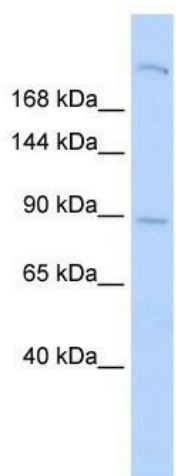


[View online »](#)

Note: Immunogen Sequence Homology: Dog: 100%; Pig: 100%; Rat: 100%; Human: 100%; Mouse: 100%; Bovine: 100%; Guinea pig: 100%; Horse: 93%; Zebrafish: 92%

Protein Families: Druggable Genome

Product images:



WB Suggested Anti-SHROOM2 Antibody Titration:
0.2-1 ug/ml; ELISA Titer: 1:312500; Positive
Control: Human Lung