

Product datasheet for **TA338518**

CLIC2 Rabbit Polyclonal Antibody

Product data:

Product Type:	Primary Antibodies
Applications:	WB
Recommended Dilution:	WB
Reactivity:	Human
Host:	Rabbit
Isotype:	IgG
Clonality:	Polyclonal
Immunogen:	The immunogen for anti-CLIC2 antibody: synthetic peptide directed towards the C terminal of human CLIC2. Synthetic peptide located within the following region: SAEPPVSRRLFLDGDQLTLADCSLLPKLNIIKVAACKYRDFDIPAEFSG
Formulation:	Liquid. Purified antibody supplied in 1x PBS buffer with 0.09% (w/v) sodium azide and 2% sucrose. <i>Note that this product is shipped as lyophilized powder to China customers.</i>
Concentration:	lot specific
Purification:	Protein A purified
Conjugation:	Unconjugated
Storage:	Store at -20°C as received.
Stability:	Stable for 12 months from date of receipt.
Predicted Protein Size:	27 kDa
Gene Name:	chloride intracellular channel 2
Database Link:	NP_001280 Entrez Gene 1193 Human O15247



[View online »](#)

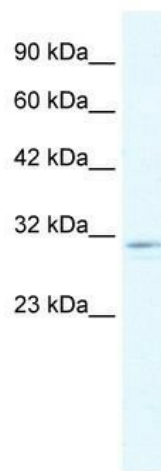
Background: This gene encodes a chloride intracellular channel protein. Chloride channels are a diverse group of proteins that regulate fundamental cellular processes including stabilization of cell membrane potential, transepithelial transport, maintenance of intracellular pH, and regulation of cell volume. This protein may play a role in inhibiting the function of ryanodine receptor 2. A mutation in this gene is the cause of X-linked mental retardation-32. [provided by RefSeq, Aug 2013]

Synonyms: CLIC2b; MRXS32; XAP121

Note: Immunogen Sequence Homology: Dog: 100%; Pig: 100%; Rat: 100%; Horse: 100%; Human: 100%; Rabbit: 100%; Guinea pig: 100%; Bovine: 93%; Mouse: 79%

Protein Families: Druggable Genome, Ion Channels: Other

Product images:



WB Suggested Anti-CLIC2 Antibody Titration: 1.25 ug/ml; ELISA Titer: 1:312500; Positive Control: HepG2 cell lysate