

Product datasheet for **TA338517**

CLIC1 Rabbit Polyclonal Antibody

Product data:

Product Type:	Primary Antibodies
Applications:	IHC, WB
Recommended Dilution:	WB, IHC
Reactivity:	Human, Mouse
Host:	Rabbit
Isotype:	IgG
Clonality:	Polyclonal
Immunogen:	The immunogen for anti-CLIC1 antibody: synthetic peptide directed towards the N terminal of human CLIC1. Synthetic peptide located within the following region: GQLPFLLYGTEVHTDTNKIEEFLEAVLCPPRYPKLAALNPESNTAGLDIF
Formulation:	Liquid. Purified antibody supplied in 1x PBS buffer with 0.09% (w/v) sodium azide and 2% sucrose. <i>Note that this product is shipped as lyophilized powder to China customers.</i>
Concentration:	lot specific
Purification:	Protein A purified
Conjugation:	Unconjugated
Storage:	Store at -20°C as received.
Stability:	Stable for 12 months from date of receipt.
Predicted Protein Size:	27 kDa
Gene Name:	chloride intracellular channel 1
Database Link:	NP_001279 Entrez Gene 114584 Mouse Entrez Gene 1192 Human O00299



[View online »](#)

Background:

Chloride channels are a diverse group of proteins that regulate fundamental cellular processes including stabilization of cell membrane potential, transepithelial transport, maintenance of intracellular pH, and regulation of cell volume. Chloride intracellular channel 1 is a member of the p64 family; the protein localizes principally to the cell nucleus and exhibits both nuclear and plasma membrane chloride ion channel activity. [provided by RefSeq, Jul 2008]

Synonyms:

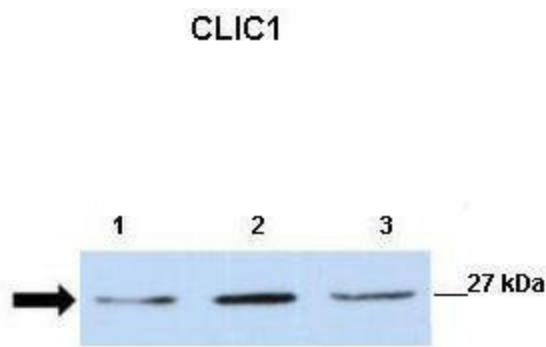
G6; NCC27

Note:

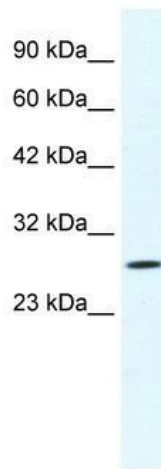
Immunogen Sequence Homology: Dog: 100%; Pig: 100%; Rat: 100%; Goat: 100%; Horse: 100%; Human: 100%; Mouse: 100%; Bovine: 100%; Rabbit: 100%; Guinea pig: 100%; Zebrafish: 93%

Protein Families:

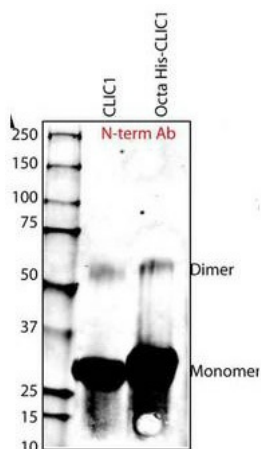
Druggable Genome, Ion Channels: Other

Product images:


Lanes: ; Lane 1: 30ug mouse renal epithelial lysate; Lane 2: 30ug mouse renal epithelial lysate; Lane 3: 30ug mouse renal epithelial lysate;
 Primary Antibody Dilution: ; 1:500; Secondary Antibody Dilution: ; 1:2500;

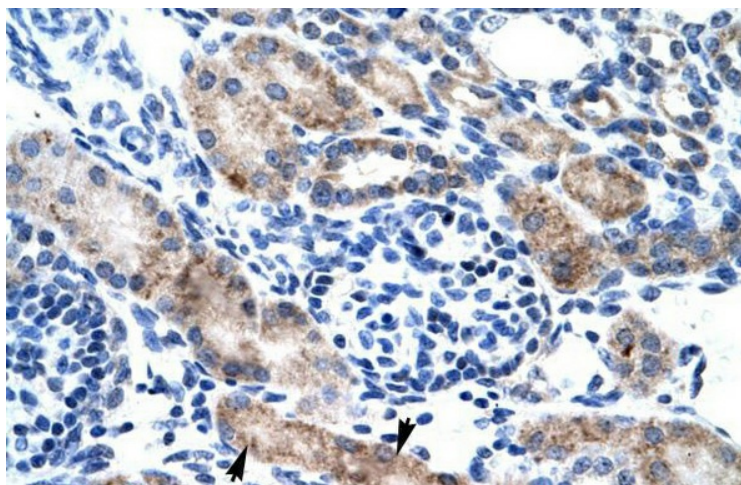


WB Suggested Anti-CLIC1 Antibody Titration: 1.25 ug/ml; ELISA Titer: 1:312500; Positive Control: Jurkat cell lysate



See Immunoblot #2 Data for more information.

Sample Type: Purified Recombinant CLIC-1
 Protein Primary Dilution: 1:1000
 Submitted By: Harpreet Singh, University of California Los Angeles



Human kidney