

## Product datasheet for **TA338516**

### CLIC1 Rabbit Polyclonal Antibody

#### Product data:

Product Type:	Primary Antibodies
Applications:	WB
Recommended Dilution:	WB
Reactivity:	Human, Mouse
Host:	Rabbit
Isotype:	IgG
Clonality:	Polyclonal
Immunogen:	The immunogen for anti-CLIC1 antibody: synthetic peptide directed towards the C terminal of human CLIC1. Synthetic peptide located within the following region: LTLADCNLLPKLHIVQVCKKYRGFTIPEAFRGVHRYLSNAYAREEFAST
Formulation:	Liquid. Purified antibody supplied in 1x PBS buffer with 0.09% (w/v) sodium azide and 2% sucrose. <i>Note that this product is shipped as lyophilized powder to China customers.</i>
Concentration:	lot specific
Purification:	Protein A purified
Conjugation:	Unconjugated
Storage:	Store at -20°C as received.
Stability:	Stable for 12 months from date of receipt.
Predicted Protein Size:	27 kDa
Gene Name:	chloride intracellular channel 1
Database Link:	<a href="#">NP_001279</a> <a href="#">Entrez Gene 114584 Mouse</a> <a href="#">Entrez Gene 1192 Human</a> <a href="#">O00299</a>



[View online »](#)

**Background:**

Chloride channels are a diverse group of proteins that regulate fundamental cellular processes including stabilization of cell membrane potential, transepithelial transport, maintenance of intracellular pH, and regulation of cell volume. Chloride intracellular channel 1 is a member of the p64 family; the protein localizes principally to the cell nucleus and exhibits both nuclear and plasma membrane chloride ion channel activity. [provided by RefSeq, Jul 2008]

**Synonyms:**

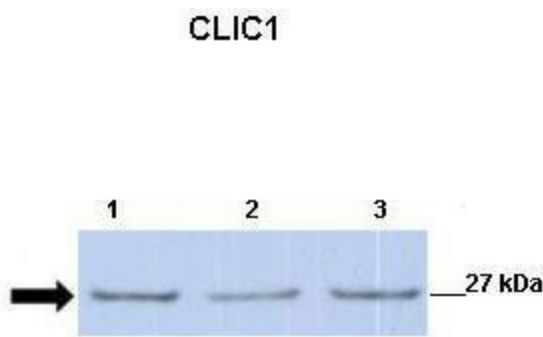
G6; NCC27

**Note:**

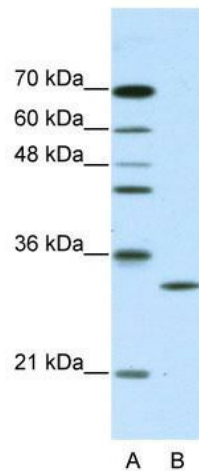
Immunogen Sequence Homology: Rat: 100%; Horse: 100%; Human: 100%; Mouse: 100%; Rabbit: 93%; Dog: 92%; Pig: 92%; Guinea pig: 92%; Goat: 83%; Bovine: 83%

**Protein Families:**

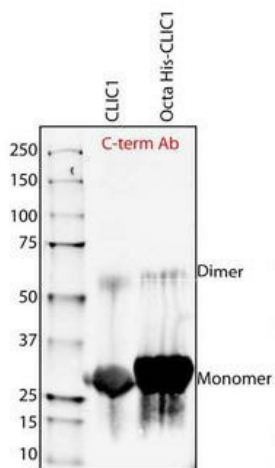
Druggable Genome, Ion Channels: Other

**Product images:**


Lanes: ; Lane 1: 30ug mouse renal epithelial lysate; Lane 2: 30ug mouse renal epithelial lysate; Lane 3: 30ug mouse renal epithelial lysate; Primary Antibody Dilution: ; 1:500; Secondary Antibody Dilution: ; 1:2500;



CLIC1 antibody - C-terminal region validated by WB using purified recombinant CLIC1 protein and transfected lysate



Sample Type: Purified Recombinant CLIC-1 protein  
 Primary Dilution: 1:1000