

Product datasheet for **TA338510**

NMDAR2A (GRIN2A) Rabbit Polyclonal Antibody

Product data:

| | |
|-------------------------|--|
| Product Type: | Primary Antibodies |
| Applications: | IHC, WB |
| Recommended Dilution: | IHC, WB |
| Reactivity: | Human, Rat |
| Host: | Rabbit |
| Isotype: | IgG |
| Clonality: | Polyclonal |
| Immunogen: | The immunogen for anti-GRIN2A antibody: synthetic peptide directed towards the middle region of human GRIN2A. Synthetic peptide located within the following region: DKIYTIDGEKEPGFHLDPQFVENVTLPENVDVFPDPYQDPSENFRKGDST |
| Formulation: | Liquid. Purified antibody supplied in 1x PBS buffer with 0.09% (w/v) sodium azide and 2% sucrose. <i>Note that this product is shipped as lyophilized powder to China customers.</i> |
| Concentration: | lot specific |
| Purification: | Protein A purified |
| Conjugation: | Unconjugated |
| Storage: | Store at -20°C as received. |
| Stability: | Stable for 12 months from date of receipt. |
| Predicted Protein Size: | 163 kDa |
| Gene Name: | glutamate ionotropic receptor NMDA type subunit 2A |
| Database Link: | NP_000824 Entrez Gene 24409 Rat Entrez Gene 2903 Human Q12879 |

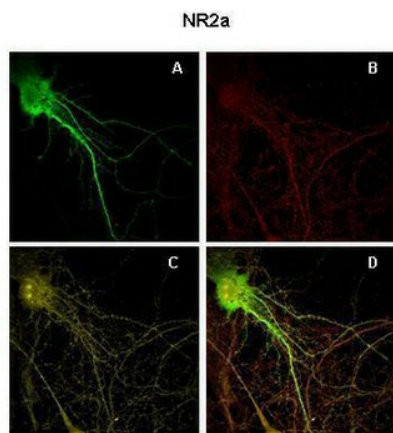


[View online »](#)

| | |
|--------------------------|---|
| Background: | This gene encodes a member of the glutamate-gated ion channel protein family. The encoded protein is an N-methyl-D-aspartate (NMDA) receptor subunit. NMDA receptors are both ligand-gated and voltage-dependent, and are involved in long-term potentiation, an activity-dependent increase in the efficiency of synaptic transmission thought to underlie certain kinds of memory and learning. These receptors are permeable to calcium ions, and activation results in a calcium influx into post-synaptic cells, which results in the activation of several signaling cascades. Disruption of this gene is associated with focal epilepsy and speech disorder with or without mental retardation. Alternative splicing results in multiple transcript variants. [provided by RefSeq, May 2014] |
| Synonyms: | EPND; FESD; GluN2A; LKS; NMDAR2A; NR2A |
| Note: | Immunogen Sequence Homology: Human: 100%; Dog: 93%; Horse: 86%; Pig: 79%; Rat: 79%; Mouse: 79%; Guinea pig: 79%; Bovine: 77% |
| Protein Families: | Druggable Genome, Ion Channels: Glutamate Receptors, Ion Channels: Sodium, Transmembrane |
| Protein Pathways: | Alzheimer's disease, Amyotrophic lateral sclerosis (ALS), Calcium signaling pathway, Long-term potentiation, Neuroactive ligand-receptor interaction, Systemic lupus erythematosus |

Product images:

WB Suggested Anti-GRIN2A Antibody Titration:
0.2-1 ug/ml; ELISA Titer: 1:62500; Positive Control:
Human Muscle



A. Green: GFP B. Red: NR2a
C. Yellow: VGLUT12 D. Merge

Sample Type. Rat Hippocampal Neurons -
14DIV Primary Antibody Dilution. 1:200 Secondary
Antibody. Anti-rabbit-Cy3 Secondary Antibody
Dilution. 1:500 Color/Signal Descriptions. Green:
GFP Red: NR2a Yellow: VGLUT12 Gene Name.
GRIN2A Submitted by. Dan Fowl