

Product datasheet for **TA338509**

GLUR3 (GRIA3) Rabbit Polyclonal Antibody

Product data:

Product Type:	Primary Antibodies
Applications:	WB
Recommended Dilution:	WB
Reactivity:	Mouse, Rat
Host:	Rabbit
Isotype:	IgG
Clonality:	Polyclonal
Immunogen:	The immunogen for Anti-Gria3 antibody is: synthetic peptide directed towards the middle region of Rat Gria3. Synthetic peptide located within the following region: TVERMVSPIESAEDLAKQTEIAYGTLDSGSTKEFFRRSKIAYVEKMWSYM
Formulation:	Liquid. Purified antibody supplied in 1x PBS buffer with 0.09% (w/v) sodium azide and 2% sucrose. <i>Note that this product is shipped as lyophilized powder to China customers.</i>
Concentration:	lot specific
Purification:	Protein A purified
Conjugation:	Unconjugated
Storage:	Store at -20°C as received.
Stability:	Stable for 12 months from date of receipt.
Predicted Protein Size:	97 kDa
Gene Name:	glutamate ionotropic receptor AMPA type subunit 3
Database Link:	NP_015564 Entrez Gene 29628 Rat Entrez Gene 53623 Mouse P42263



[View online »](#)

Background: Glutamate receptors are the predominant excitatory neurotransmitter receptors in the mammalian brain and are activated in a variety of normal neurophysiologic processes. These receptors are heteromeric protein complexes composed of multiple subunits, arranged to form ligand-gated ion channels. The classification of glutamate receptors is based on their activation by different pharmacologic agonists. The subunit encoded by this gene belongs to a family of AMPA (alpha-amino-3-hydroxy-5-methyl-4-isoxazole propionate)-sensitive glutamate receptors, and is subject to RNA editing (AGA->GGA; R->G). Alternative splicing at this locus results in different isoforms, which may vary in their signal transduction properties. [provided by RefSeq, Jul 2008]

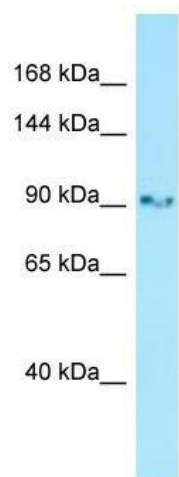
Synonyms: GluA3; GLUR-C; GLUR-K3; GLUR3; GLURC; MRX94

Note: Immunogen Sequence Homology: Dog: 100%; Pig: 100%; Rat: 100%; Horse: 100%; Human: 100%; Mouse: 100%; Bovine: 100%; Rabbit: 100%; Zebrafish: 100%; Guinea pig: 100%

Protein Families: Druggable Genome, Ion Channels: Glutamate Receptors, Transmembrane

Protein Pathways: Long-term depression, Neuroactive ligand-receptor interaction

Product images:



Host: Rabbit; Target Name: Gria3; Sample Tissue: Rat Stomach lysates; Antibody Dilution: 1.0 ug/ml