

Product datasheet for **TA338507**

GABA A Receptor beta 2 (GABRB2) Rabbit Polyclonal Antibody

Product data:

Product Type:	Primary Antibodies
Applications:	WB
Recommended Dilution:	WB
Reactivity:	Human
Host:	Rabbit
Isotype:	IgG
Clonality:	Polyclonal
Immunogen:	The immunogen for anti-GABRB2 antibody: synthetic peptide directed towards the N terminal of human GABRB2. Synthetic peptide located within the following region: DNRVADQLWVPDTYFLNDKKSFVHGVTVKNRMIRLHPDGTVLYGLRITTT
Formulation:	Liquid. Purified antibody supplied in 1x PBS buffer with 0.09% (w/v) sodium azide and 2% sucrose. <i>Note that this product is shipped as lyophilized powder to China customers.</i>
Concentration:	lot specific
Purification:	Protein A purified
Conjugation:	Unconjugated
Storage:	Store at -20°C as received.
Stability:	Stable for 12 months from date of receipt.
Predicted Protein Size:	54 kDa
Gene Name:	gamma-aminobutyric acid type A receptor beta2 subunit
Database Link:	NP_000804 Entrez Gene 2561 Human P47870



[View online »](#)

Background: The gamma-aminobutyric acid (GABA) A receptor is a multisubunit chloride channel that mediates the fastest inhibitory synaptic transmission in the central nervous system. This gene encodes GABA A receptor, beta 2 subunit. It is mapped to chromosome 5q34 in a cluster comprised of genes encoding alpha 1 and gamma 2 subunits of the GABA A receptor. Alternative splicing of this gene generates 2 transcript variants, differing by a 114 bp insertion. [provided by RefSeq, Jul 2008]

Synonyms: MGC119386; MGC119388; MGC119389

Note: Immunogen Sequence Homology: Dog: 100%; Pig: 100%; Rat: 100%; Horse: 100%; Human: 100%; Mouse: 100%; Sheep: 100%; Bovine: 100%; Rabbit: 100%; Zebrafish: 100%; Guinea pig: 100%

Protein Families: Druggable Genome, Ion Channels: Cys-loop Receptors, Transmembrane

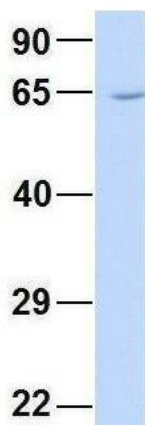
Protein Pathways: Neuroactive ligand-receptor interaction

Product images:



WB Suggested Anti-GABRB2 Antibody Titration:
0.2-1 ug/ml; ELISA Titer: 1:312500; Positive
Control: 293T cell lysate

GABRB2



Rabbit Anti-GABRB2
Sample Type: Human Fetal Liver
Antibody Concentration: 1ug/mL

2Hum. Fetal Liver; Host: Rabbit; Target Name:
FAM46C; Sample Tissue: Human Fetal Liver;
Antibody Dilution: 1.0 ug/ml