

## Product datasheet for **TA338506**

### GABA A Receptor beta 1 (GABRB1) Rabbit Polyclonal Antibody

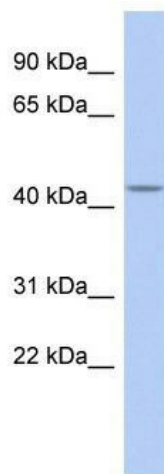
#### Product data:

Product Type:	Primary Antibodies
Applications:	WB
Recommended Dilution:	WB
Reactivity:	Human
Host:	Rabbit
Isotype:	IgG
Clonality:	Polyclonal
Immunogen:	The immunogen for anti-GABRB1 antibody: synthetic peptide directed towards the N terminal of human GABRB1. Synthetic peptide located within the following region: TLDNRVADQLWVPDITYFLNDKKSFVHGVTVKNRMIRLHPDGTVLYGLRIT
Formulation:	Liquid. Purified antibody supplied in 1x PBS buffer with 0.09% (w/v) sodium azide and 2% sucrose. <i>Note that this product is shipped as lyophilized powder to China customers.</i>
Concentration:	lot specific
Purification:	Protein A purified
Conjugation:	Unconjugated
Storage:	Store at -20°C as received.
Stability:	Stable for 12 months from date of receipt.
Predicted Protein Size:	51 kDa
Gene Name:	gamma-aminobutyric acid type A receptor beta1 subunit
Database Link:	<a href="#">NP_000803</a> <a href="#">Entrez Gene 2560 Human P18505</a>



[View online »](#)

- Background:** The gamma-aminobutyric acid (GABA) A receptor is a multisubunit chloride channel that mediates the fastest inhibitory synaptic transmission in the central nervous system. This gene encodes GABA A receptor, beta 1 subunit. It is mapped to chromosome 4p12 in a cluster comprised of genes encoding alpha 4, alpha 2 and gamma 1 subunits of the GABA A receptor. Alteration of this gene is implicated in the pathogenetics of schizophrenia. [provided by RefSeq, Jul 2008]
- Synonyms:** beta 1; gamma-aminobutyric acid (GABA) A receptor
- Note:** Immunogen Sequence Homology: Dog: 100%; Pig: 100%; Rat: 100%; Horse: 100%; Human: 100%; Mouse: 100%; Sheep: 100%; Bovine: 100%; Rabbit: 100%; Zebrafish: 100%; Guinea pig: 100%
- Protein Families:** Druggable Genome, Ion Channels: Cys-loop Receptors, Transmembrane
- Protein Pathways:** Neuroactive ligand-receptor interaction
- Product images:**



WB Suggested Anti-GABRB1 Antibody Titration:  
0.2-1 ug/ml; ELISA Titer: 1:312500; Positive  
Control: Human Small Intestine