

Product datasheet for **TA338503**

GABA A Receptor alpha 4 (GABRA4) Rabbit Polyclonal Antibody

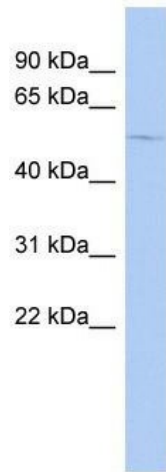
Product data:

Product Type:	Primary Antibodies
Applications:	WB
Recommended Dilution:	WB
Reactivity:	Human
Host:	Rabbit
Isotype:	IgG
Clonality:	Polyclonal
Immunogen:	The immunogen for anti-GABRA4 antibody: synthetic peptide directed towards the N terminal of human GABRA4. Synthetic peptide located within the following region: MVSAKKVPALIASAGVSFALLRFLCLAVCLNESPQNQKEEKLCTENFTR
Formulation:	Liquid. Purified antibody supplied in 1x PBS buffer with 0.09% (w/v) sodium azide and 2% sucrose. <i>Note that this product is shipped as lyophilized powder to China customers.</i>
Concentration:	lot specific
Purification:	Protein A purified
Conjugation:	Unconjugated
Storage:	Store at -20°C as received.
Stability:	Stable for 12 months from date of receipt.
Predicted Protein Size:	58 kDa
Gene Name:	gamma-aminobutyric acid type A receptor alpha4 subunit
Database Link:	NP_000800 Entrez Gene 2557 Human P48169



[View online »](#)

- Background:** Gamma-aminobutyric acid (GABA) is the major inhibitory neurotransmitter in the mammalian brain where it acts at GABA-A receptors, which are ligand-gated chloride channels. Chloride conductance of these channels can be modulated by agents such as benzodiazepines that bind to the GABA-A receptor. At least 16 distinct subunits of GABA-A receptors have been identified. This gene encodes subunit alpha-4, which is involved in the etiology of autism and eventually increases autism risk through interaction with another subunit, gamma-aminobutyric acid receptor beta-1 (GABRB1). Alternatively spliced transcript variants encoding different isoforms have been found in this gene. [provided by RefSeq, Feb 2011]
- Synonyms:** alpha 4; gamma-aminobutyric acid (GABA) A receptor; gamma-aminobutyric acid A receptor
- Note:** Immunogen Sequence Homology: Rat: 100%; Human: 100%; Rabbit: 93%; Bovine: 86%; Horse: 79%
- Protein Families:** Druggable Genome, Ion Channels: Cys-loop Receptors, Transmembrane
- Protein Pathways:** Neuroactive ligand-receptor interaction
- Product images:**



WB Suggested Anti-GABRA4 Antibody Titration:
0.2-1 ug/ml; ELISA Titer: 1:2500; Positive Control:
ACHN cell lysate