

Product datasheet for **TA338498**

CHRND Rabbit Polyclonal Antibody

Product data:

Product Type:	Primary Antibodies
Applications:	WB
Recommended Dilution:	WB
Reactivity:	Human
Host:	Rabbit
Isotype:	IgG
Clonality:	Polyclonal
Immunogen:	The immunogen for anti-CHRND antibody: synthetic peptide directed towards the N terminal of human CHRND. Synthetic peptide located within the following region: RLIRHLFQEKGYNKELRPVAHKEESVDVALALTLNLSLKEVEETLTTN
Formulation:	Liquid. Purified antibody supplied in 1x PBS buffer with 0.09% (w/v) sodium azide and 2% sucrose. <i>Note that this product is shipped as lyophilized powder to China customers.</i>
Concentration:	lot specific
Purification:	Affinity Purified
Conjugation:	Unconjugated
Storage:	Store at -20°C as received.
Stability:	Stable for 12 months from date of receipt.
Predicted Protein Size:	57 kDa
Gene Name:	cholinergic receptor nicotinic delta subunit
Database Link:	NP_000742 Entrez Gene 1144 Human Q07001



[View online »](#)

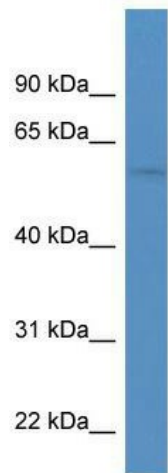
Background: The acetylcholine receptor of muscle has 5 subunits of 4 different types: 2 alpha and 1 each of beta, gamma and delta subunits. After acetylcholine binding, the receptor undergoes an extensive conformation change that affects all subunits and leads to opening of an ion-conducting channel across the plasma membrane. Defects in this gene are a cause of multiple pterygium syndrome lethal type (MUPSL), congenital myasthenic syndrome slow-channel type (SCCMS), and congenital myasthenic syndrome fast-channel type (FCCMS). Several transcript variants, some protein-coding and some not, have been found for this gene. [provided by RefSeq, Feb 2012]

Synonyms: ACHRD; CMS2A; CMS3A; CMS3B; CMS3C; FCCMS; SCCMS

Note: Immunogen Sequence Homology: Dog: 100%; Pig: 100%; Rat: 100%; Horse: 100%; Human: 100%; Mouse: 100%; Bovine: 100%; Rabbit: 100%; Guinea pig: 100%; Zebrafish: 92%

Protein Families: Druggable Genome, Ion Channels: Cys-loop Receptors, Transmembrane

Product images:



WB Suggested Anti-CHRND Antibody Titration:
0.2-1 ug/ml; ELISA Titer: 1:62500; Positive Control:
Hela cell lysate