

Product datasheet for **TA338497**

Nicotinic Acetylcholine Receptor beta 2 (CHRNA2) Rabbit Polyclonal Antibody

Product data:

Product Type:	Primary Antibodies
Applications:	IHC, WB
Recommended Dilution:	WB, IHC
Reactivity:	Human
Host:	Rabbit
Isotype:	IgG
Clonality:	Polyclonal
Immunogen:	The immunogen for anti-CHRNA2 antibody: synthetic peptide directed towards the middle region of human CHRNA2. Synthetic peptide located within the following region: CKIEVKHFQDQVCTMKFRSWTYDRTEIDLVLKSEVASLDDFTPSGEWD
Formulation:	Liquid. Purified antibody supplied in 1x PBS buffer with 0.09% (w/v) sodium azide and 2% sucrose. <i>Note that this product is shipped as lyophilized powder to China customers.</i>
Concentration:	lot specific
Purification:	Protein A purified
Conjugation:	Unconjugated
Storage:	Store at -20°C as received.
Stability:	Stable for 12 months from date of receipt.
Predicted Protein Size:	57 kDa
Gene Name:	cholinergic receptor nicotinic beta 2 subunit
Database Link:	NP_000739 Entrez Gene 1141 Human P17787



[View online »](#)

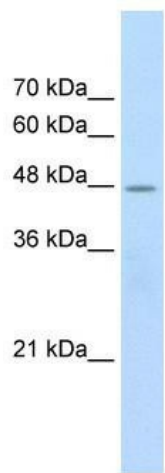
Background: Neuronal acetylcholine receptors are homo- or heteropentameric complexes composed of homologous alpha and beta subunits. They belong to a superfamily of ligand-gated ion channels which allow the flow of sodium and potassium across the plasma membrane in response to ligands such as acetylcholine and nicotine. This gene encodes one of several beta subunits. Mutations in this gene are associated with autosomal dominant nocturnal frontal lobe epilepsy. [provided by RefSeq, Jul 2008]

Synonyms: EFNL3; nAChRB2

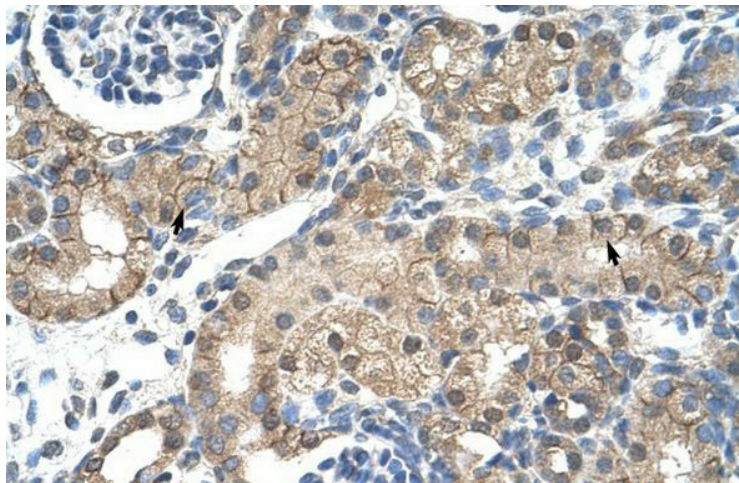
Note: Immunogen Sequence Homology: Pig: 100%; Human: 100%; Dog: 93%; Rat: 93%; Mouse: 93%; Bovine: 93%; Guinea pig: 93%

Protein Families: Druggable Genome, Ion Channels: Cys-loop Receptors, Transmembrane

Product images:



WB Suggested Anti-CHRNA2 Antibody Titration: 2.5 ug/ml; Positive Control: Jurkat cell lysate
CHRNA2 is supported by BioGPS gene expression data to be expressed in Jurkat



Human kidney