

Product datasheet for **TA338495**

POPDC3 Rabbit Polyclonal Antibody

Product data:

Product Type:	Primary Antibodies
Applications:	WB
Recommended Dilution:	WB
Reactivity:	Human
Host:	Rabbit
Isotype:	IgG
Clonality:	Polyclonal
Immunogen:	The immunogen for anti-POPDC3 antibody: synthetic peptide directed towards the C terminal of human POPDC3. Synthetic peptide located within the following region: YLLFAQHRYISRLFSVLIGSDIADKLYALNDRVYIGKRYHYDIRLPNFYQ
Formulation:	Liquid. Purified antibody supplied in 1x PBS buffer with 0.09% (w/v) sodium azide and 2% sucrose. <i>Note that this product is shipped as lyophilized powder to China customers.</i>
Purification:	Affinity Purified
Conjugation:	Unconjugated
Storage:	Store at -20°C as received.
Stability:	Stable for 12 months from date of receipt.
Predicted Protein Size:	34 kDa
Gene Name:	popeye domain containing 3
Database Link:	NP_071756 Entrez Gene 64208 Human Q9HBV1
Background:	POPDC3 is a member of the POP family of proteins containing three putative transmembrane domains. The protein is expressed in cardiac and skeletal muscle and may play an important role in these tissues during development. This gene encodes a member of the POP family of proteins containing three putative transmembrane domains. This gene is expressed in cardiac and skeletal muscle and may play an important role in these tissues during development.



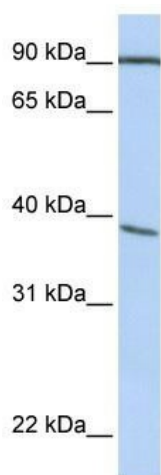
[View online »](#)

Synonyms: bA355M14.1; POP3

Note: Immunogen Sequence Homology: Dog: 100%; Pig: 100%; Rat: 100%; Horse: 100%; Human: 100%; Mouse: 100%; Bovine: 100%; Rabbit: 100%; Guinea pig: 100%; Zebrafish: 92%

Protein Families: Transmembrane

Product images:



WB Suggested Anti-POPDC3 Antibody Titration:
0.2-1 ug/ml; Positive Control: HepG2 cell lysate