

## Product datasheet for **TA338494**

### C11orf24 Rabbit Polyclonal Antibody

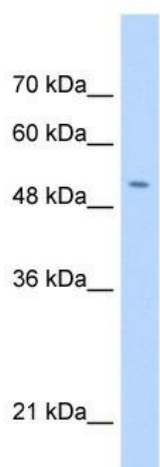
#### Product data:

Product Type:	Primary Antibodies
Applications:	IF, WB
Recommended Dilution:	WB, IF
Reactivity:	Human
Host:	Rabbit
Isotype:	IgG
Clonality:	Polyclonal
Immunogen:	The immunogen for anti-C11orf24 antibody: synthetic peptide directed towards the N terminal of human C11orf24. Synthetic peptide located within the following region: SPVTLTKGTSA AHLNSMEVTTEDTSRTDVSEPATSGGAADGVTSIAPTAV
Formulation:	Liquid. Purified antibody supplied in 1x PBS buffer with 0.09% (w/v) sodium azide and 2% sucrose.
Purification:	Affinity Purified
Conjugation:	Unconjugated
Storage:	Store at -20°C as received.
Stability:	Stable for 12 months from date of receipt.
Predicted Protein Size:	46 kDa
Gene Name:	chromosome 11 open reading frame 24
Database Link:	<a href="#">NP_071733</a> <a href="#">Entrez Gene 53838 Human</a> <a href="#">Q96F05</a>
Background:	The function remains unknown.
Synonyms:	DM4E3
Note:	Immunogen Sequence Homology: Human: 100%
Protein Families:	Druggable Genome, Transmembrane

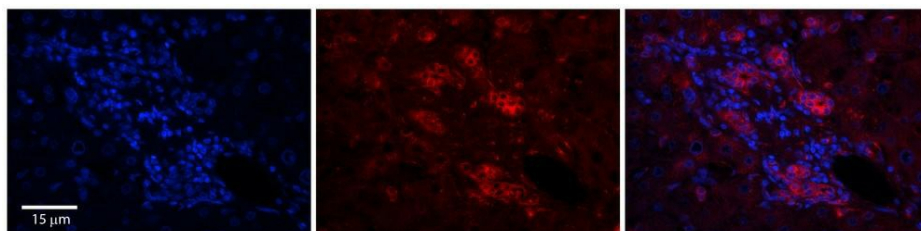


[View online »](#)

## Product images:



WB Suggested Anti-C11orf24 Antibody Titration: 0.2-1 ug/ml; Positive Control: HepG2 cell lysate. C11orf24 is strongly supported by BioGPS gene expression data to be expressed in Human HepG2 cells



Rabbit Anti-C11orf24 Antibody; Formalin Fixed Paraffin Embedded Tissue: Human Adult Liver; Observed Staining: Membrane but only in connective tissue cells in the interlobular septum, very low tissue distribution; Primary Antibody Concentration: 1: 100; Se