

Product datasheet for TA338492

TCTA Rabbit Polyclonal Antibody

Product data:

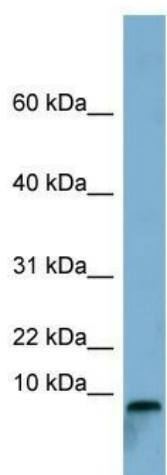
Product Type:	Primary Antibodies
Applications:	WB
Recommended Dilution:	WB
Reactivity:	Human
Host:	Rabbit
Isotype:	IgG
Clonality:	Polyclonal
Immunogen:	The immunogen for anti-TCTA antibody: synthetic peptide directed towards the middle region of human TCTA. Synthetic peptide located within the following region: IQLAWGFYGNVTGLYHRPGLGGQNGSTPDGSTHFPSWEMAANEPLKTHR
Formulation:	Liquid. Purified antibody supplied in 1x PBS buffer with 0.09% (w/v) sodium azide and 2% sucrose. <i>Note that this product is shipped as lyophilized powder to China customers.</i>
Purification:	Affinity Purified
Conjugation:	Unconjugated
Storage:	Store at -20°C as received.
Stability:	Stable for 12 months from date of receipt.
Predicted Protein Size:	11 kDa
Gene Name:	T-cell leukemia translocation altered
Database Link:	NP_071503 Entrez Gene 6988 Human P57738
Background:	A chromosomal aberration, translocation t(1;3)(p34;p21), involving TCTA is associated with T-cell acute lymphoblastic leukemia (T-ALL).
Synonyms:	9130410M22Rik; AW553637; C85065; Tctal
Note:	Immunogen Sequence Homology: Dog: 100%; Pig: 100%; Rat: 100%; Human: 100%; Mouse: 100%; Bovine: 100%; Rabbit: 100%; Guinea pig: 100%; Horse: 86%



[View online »](#)

Protein Families: Transmembrane

Product images:



WB Suggested Anti-TCTA Antibody Titration: 0.2-1 ug/ml; ELISA Titer: 1: 12500; Positive Control: Human Stomach