

Product datasheet for **TA338490**

XYLT2 Rabbit Polyclonal Antibody

Product data:

Product Type:	Primary Antibodies
Applications:	WB
Recommended Dilution:	WB
Reactivity:	Human
Host:	Rabbit
Isotype:	IgG
Clonality:	Polyclonal
Immunogen:	The immunogen for anti-XYLT2 antibody: synthetic peptide directed towards the middle region of human XYLT2. Synthetic peptide located within the following region: PMGTPLCRFEPRGLPSSVHLYFYDDHFQGYLVTQAVQPSAQGPAETLEMW
Formulation:	Liquid. Purified antibody supplied in 1x PBS buffer with 0.09% (w/v) sodium azide and 2% sucrose.
Purification:	Affinity Purified
Conjugation:	Unconjugated
Storage:	Store at -20°C as received.
Stability:	Stable for 12 months from date of receipt.
Predicted Protein Size:	97 kDa
Gene Name:	xylosyltransferase 2
Database Link:	NP_071450 Entrez Gene 64132 Human Q9H1B5
Background:	XYLT2 is an isoform of xylosyltransferase, which belongs to a family of glycosyltransferases. This enzyme transfers xylose from UDP-xylose to specific serine residues of the core protein and initiates the biosynthesis of glycosaminoglycan chains in proteo
Synonyms:	PXYLT2; SOS; XT-II; XT2; xylT-II
Note:	Immunogen Sequence Homology: Dog: 100%; Pig: 100%; Rat: 100%; Horse: 100%; Human: 100%; Mouse: 100%; Rabbit: 100%; Bovine: 93%; Guinea pig: 92%

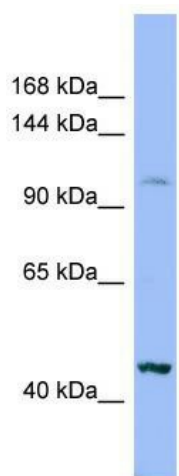


[View online »](#)

Protein Families: Transmembrane

Protein Pathways: Chondroitin sulfate biosynthesis, Heparan sulfate biosynthesis, Metabolic pathways

Product images:



WB Suggested Anti-XYLT2 Antibody Titration: 0.2-1 ug/ml; ELISA Titer: 1: 312500; Positive Control: HT1080 cell lysate