

Product datasheet for **TA338484**

Cadherin like 23 (CDH23) Rabbit Polyclonal Antibody

Product data:

Product Type:	Primary Antibodies
Applications:	WB
Recommended Dilution:	WB
Reactivity:	Human
Host:	Rabbit
Isotype:	IgG
Clonality:	Polyclonal
Immunogen:	The immunogen for anti-CDH23 antibody is: synthetic peptide directed towards the N-terminal region of Human CDH23. Synthetic peptide located within the following region: DHQGVITRKVNIQVGDVNDNAPTFFHNQPYSVRIPENTPVGTPIFIVNATD
Formulation:	Liquid. Purified antibody supplied in 1x PBS buffer with 0.09% (w/v) sodium azide and 2% sucrose. <i>Note that this product is shipped as lyophilized powder to China customers.</i>
Purification:	Affinity Purified
Conjugation:	Unconjugated
Storage:	Store at -20°C as received.
Stability:	Stable for 12 months from date of receipt.
Predicted Protein Size:	44 kDa
Gene Name:	cadherin-related 23
Database Link:	NP_001165403 Entrez Gene 64072 Human Q9H251
Background:	This gene is a member of the cadherin superfamily, whose genes encode calcium dependent cell-cell adhesion glycoproteins. The encoded protein is thought to be involved in stereocilia organization and hair bundle formation. The gene is located in a region containing the human deafness loci DFNB12 and USH1D. Usher syndrome 1D and nonsyndromic autosomal recessive deafness DFNB12 are caused by allelic mutations of this cadherin-like gene. Alternative splice variants encoding different isoforms have been described.



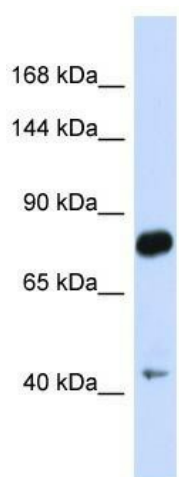
[View online »](#)

Synonyms: CDHR23; USH1D

Note: Immunogen Sequence Homology: Dog: 100%; Pig: 100%; Rat: 100%; Horse: 100%; Human: 100%; Mouse: 100%; Bovine: 100%; Rabbit: 100%; Guinea pig: 100%

Protein Families: Transmembrane

Product images:



Host: Rabbit; Target Name: CDH23; Sample Tissue: Fetal Brain lysates; Antibody Dilution: 1.0 ug/ml