

## Product datasheet for **TA338483**

### PERP Rabbit Polyclonal Antibody

#### Product data:

Product Type:	Primary Antibodies
Applications:	WB
Recommended Dilution:	WB
Reactivity:	Human
Host:	Rabbit
Isotype:	IgG
Clonality:	Polyclonal
Immunogen:	The immunogen for anti-PERP antibody: synthetic peptide directed towards the middle region of human PERP. Synthetic peptide located within the following region: FLRVIGLLALAAVFQIISLVIYPVKYTQTFTLHANPAVTYIYNWAYGFG
Formulation:	Liquid. Purified antibody supplied in 1x PBS buffer with 0.09% (w/v) sodium azide and 2% sucrose. <i>Note that this product is shipped as lyophilized powder to China customers.</i>
Purification:	Affinity Purified
Conjugation:	Unconjugated
Storage:	Store at -20°C as received.
Stability:	Stable for 12 months from date of receipt.
Predicted Protein Size:	21 kDa
Gene Name:	PERP, TP53 apoptosis effector
Database Link:	<a href="#">NP_071404</a> <a href="#">Entrez Gene 64065 Human</a> <a href="#">Q96FX8</a>
Background:	PERP is a component of intercellular desmosome junctions. PERP plays a role in stratified epithelial integrity and cell-cell adhesion by promoting desmosome assembly. PERP also plays a role as an effector in the TP53-dependent apoptotic pathway.
Synonyms:	dj496H19.1; KCP1; KRTCAP1; PIGPC1; THW
Note:	Immunogen Sequence Homology: Human: 100%; Horse: 93%; Dog: 86%; Pig: 86%; Rat: 86%; Mouse: 86%; Bovine: 86%; Rabbit: 86%; Guinea pig: 86%

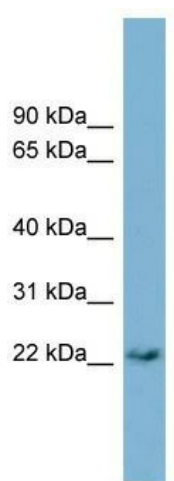


[View online »](#)

Protein Families: Druggable Genome, Transmembrane

Protein Pathways: p53 signaling pathway

### Product images:



WB Suggested Anti-PERP Antibody Titration: 0.2-1 ug/ml; ELISA Titer: 1: 62500; Positive Control: PANC1 cell lysate. PERP is supported by BioGPS gene expression data to be expressed in PANC1